



AUSTRALIAN RAIL TRACK CORPORATION LTD

Southern Sydney Freight Line IMPORTANT COMMUNITY INFORMATION

Minto Works

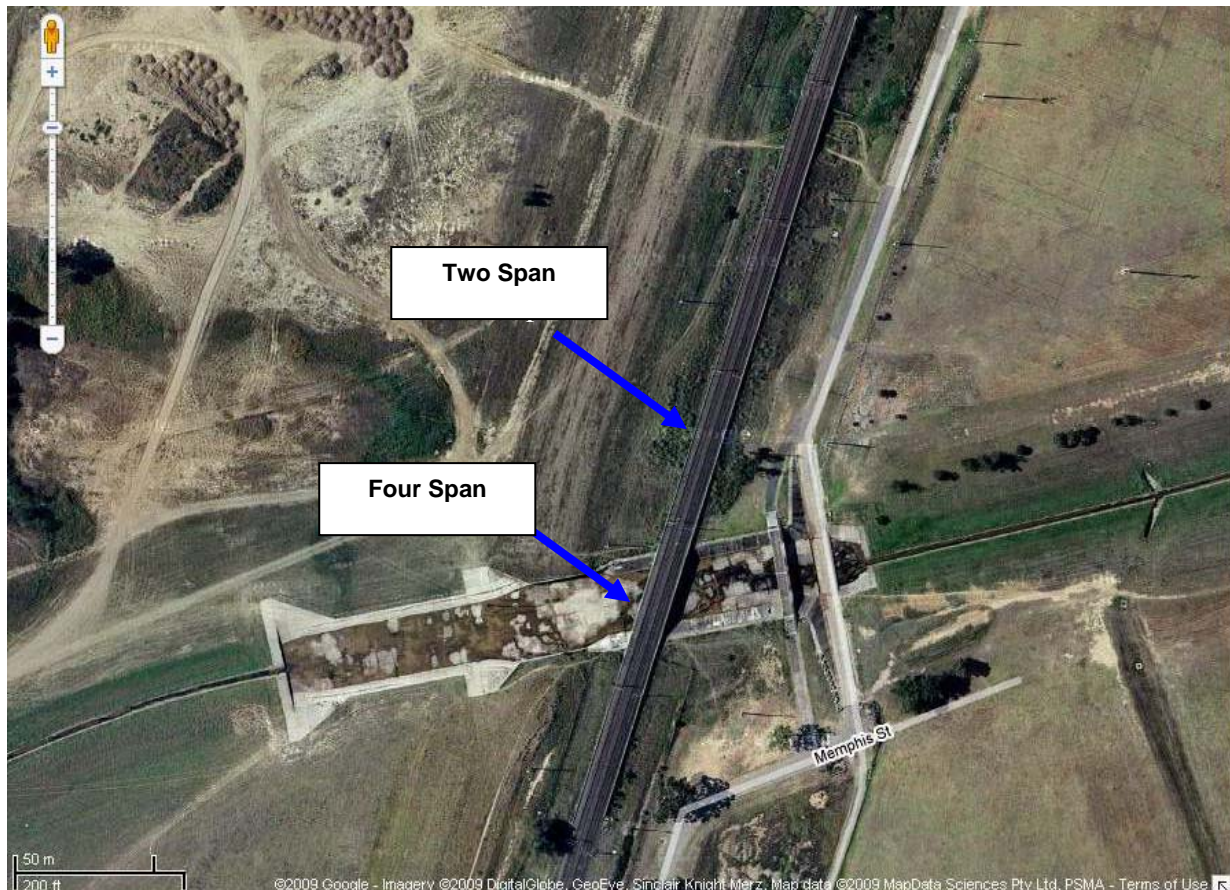
Australian Rail Track Corporation (ARTC) will be undertaking construction works in your area over the weekend of 19th to the 21st September 2009.

These works are part of the construction of the Southern Sydney Freight Line (SSFL). In this area, there will be work across two sites as below:

Minto Station – the works will begin at 6am until 10pm on both Saturday and Sunday. The work will involve the demolition of the existing ramp and the piling for the lift pit. The equipment used will be 2 x piling rigs, rubber tyre tippers, concrete pump and city crane.



Minto Viaduct Bridge – the works will begin at 6am on Saturday and will continue until 4am on Monday. The works will involve the installation of 750 deep girder planks for the 2-span and 4-span bridge. The equipment used will be a 90t crane, franna, hand tools, concrete agitators, concrete pump trucks, general construction delivery trucks.



We appreciate everyone's patience while we build this important project.

Further information

For further information and any enquiries, please call the 24 Hour Information and

Complaints Line 1800 182 543



Or Email ssfl@artc.com.au or visit www.ssfl.artc.com.au

Translating & Interpreting Service – Please Phone: 131 450