



AUSTRALIAN RAIL TRACK CORPORATION LTD

Southern Sydney Freight Line IMPORTANT COMMUNITY INFORMATION

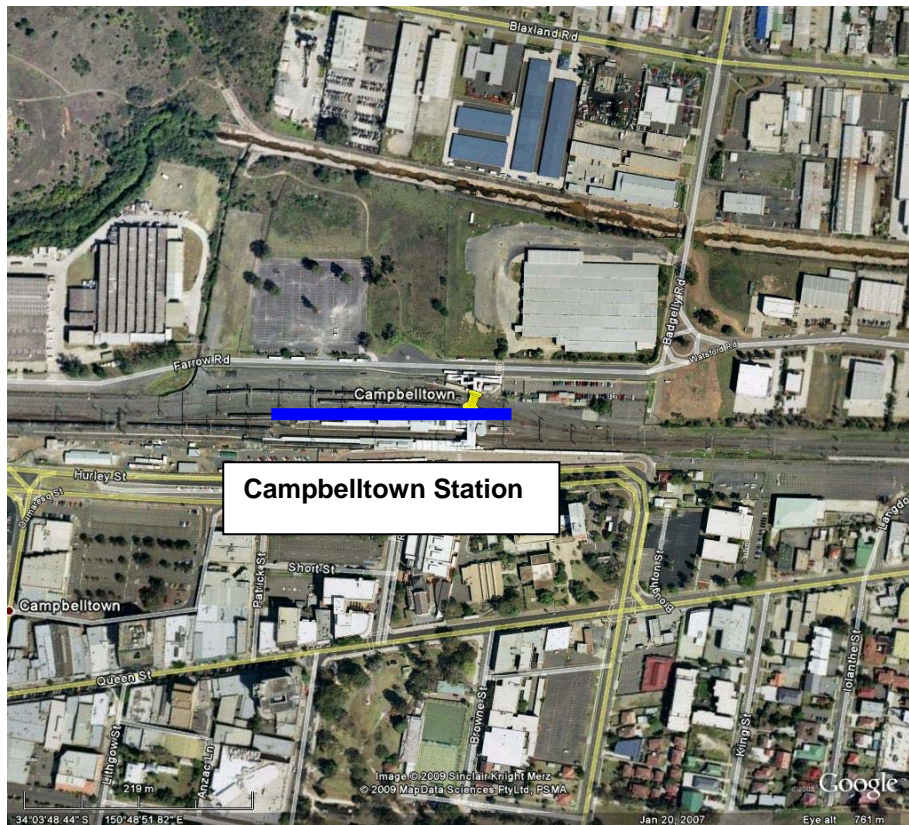
Lumeah Station to Campbelltown Station Weekend Works

Australian Rail Track Corporation (ARTC) will be undertaking construction works in your area over the weekend of 24th and 25th October 2009. These works are part of the construction of the Southern Sydney Freight Line (SSFL). In this area, there will be work across the following sites as below:

Lumeah Station - The works will begin at 2.00am Saturday until 2.00am Monday. The works will involve potholing, excavation and block work. The equipment utilised will be a sucker truck, excavator, franna crane and concrete pump.

Lumeah to Campbelltown – the works will take place from 8.00 am until 6.00pm on both Saturday and Sunday. The works will involve the installation of new buried cable route. The equipment utilised will be site vehicles, vacuum excavation machine, backhoe, directional boring machine and cable ploughing plant.

Campbelltown Station - The works will begin at 2.00am Saturday until 2.00am Monday. The works will involve piling and screwing piles on platforms and stabling yard. The equipment utilised will be 2 x piling rigs, rubber tyre tippers, concrete pump and city crane.



We appreciate everyone's patience while we build this important project.

Further information

For further information and any enquiries, please call the 24 Hour Information and Complaints Line **1800 182 543**



Or Email ssfl@artc.com.au or visit www.ssfl.artc.com.au

Translating & Interpreting Service – Please Phone: 131 450