



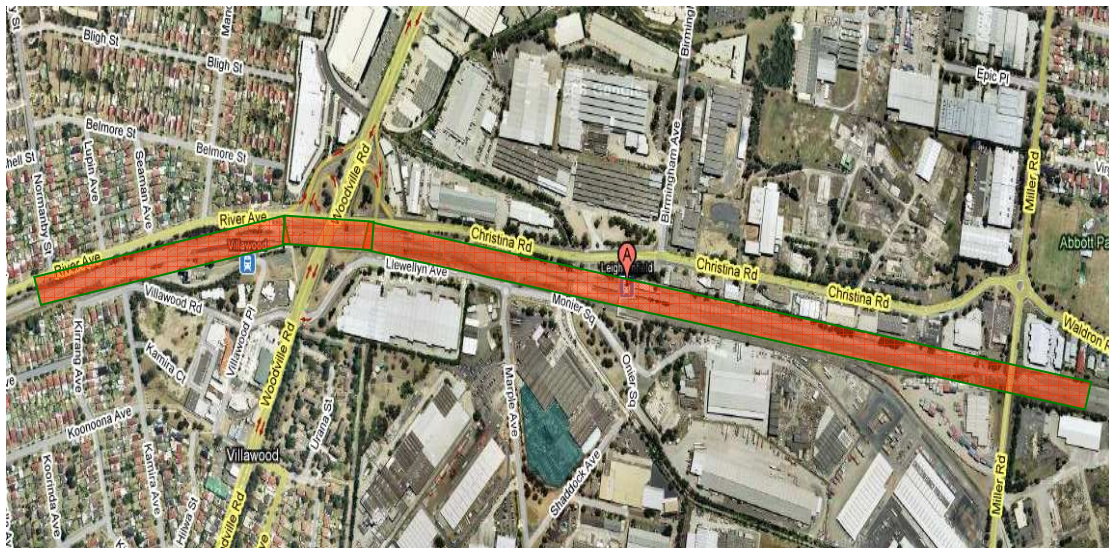
AUSTRALIAN RAIL TRACK CORPORATION LTD

## Southern Sydney Freight Line IMPORTANT COMMUNITY INFORMATION

### Leightonfield and Woodville Road Overbridges Weekend Works

Australian Rail Track Corporation (ARTC) will be undertaking construction works in your area over the weekend of 14<sup>th</sup> to the 16<sup>th</sup> November 2009. These works are part of the construction of the Southern Sydney Freight Line (SSFL). In this area, there will be work across four sites as below:

**Site One: Leightonfield (from approx Miller Rd and beyond Woodville Rd in the rail corridor)** – The works will begin at 7.00am and continue until Midnight on both Saturday and Sunday. The works will involve decommissioning overhead wires, and relocating cable routes for signalling equipment. The equipment used at this site will be a 3 x hi-rail cherrypickers, excavator, dumpy and hand tools.



**Site Two: Leightonfield Siding (from Miller Road in the rail corridor to Maple Ave)** – The works will begin at 8.00am and continue until 4.00pm on both Saturday and Sunday. The works will involve the installation of new power poles and stringing new conductors across the track. The equipment

used at this site will be a 25t slew crane, pole truck, NDD truck, light trucks with hand tools and cable.



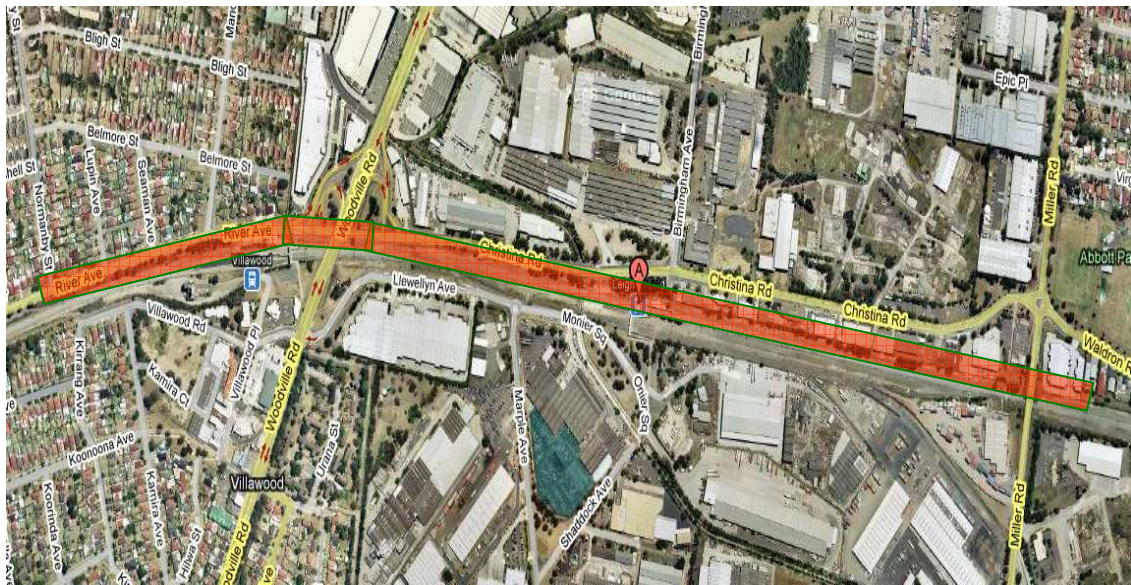
**Site Three: Leightonfield ( from Miller Rd to Wooville Rd in the rail corridor) –** The works will begin at 7.00am until 5.00pm on both Saturday and Sunday, The works will involve the relocation of cable routes for signalling equipment. The equipment used will be excavator, dumpy and handtools.



**Site Four: Woodville Road Overbridge –** The works will being at 6.00am and continue until 4.00pm on Saturday and Sunday the works will begin at 6am and continue until 4.00pm. The works will involve the placement of nut and plate to anchor passing through the existing abutment, demolition of wing wall tops and hoarding installation along wing wall. The equipment used at this site will be an elevated work platform, jackhammers and hand tools.



**Site Four: Woodville Road Overbridge** – The works will begin at 6.00am and continue until 10.00pm on both Saturday and Sunday. The works will involve the removal of shoring, stripping formwork, patching and repairing deflection wall, backfill of ballast, and pidgeon spike installation. The equipment used will be a balloon type tip trucks, hand tools, knuckle boom lifts, hiab on hi-rail and 5t excavator hi-rail.



We appreciate everyone's patience while we build this important project.

### **Further information**

For further information and any enquiries, please call the 24 Hour Information and

**Complaints Line 1800 182 543**



Or Email [ssfl@artc.com.au](mailto:ssfl@artc.com.au) or visit [www.ssfl.artc.com.au](http://www.ssfl.artc.com.au)

Translating & Interpreting Service – Please Phone: 131 450