



AUSTRALIAN RAIL TRACK CORPORATION LTD

Southern Sydney Freight Line IMPORTANT COMMUNITY INFORMATION

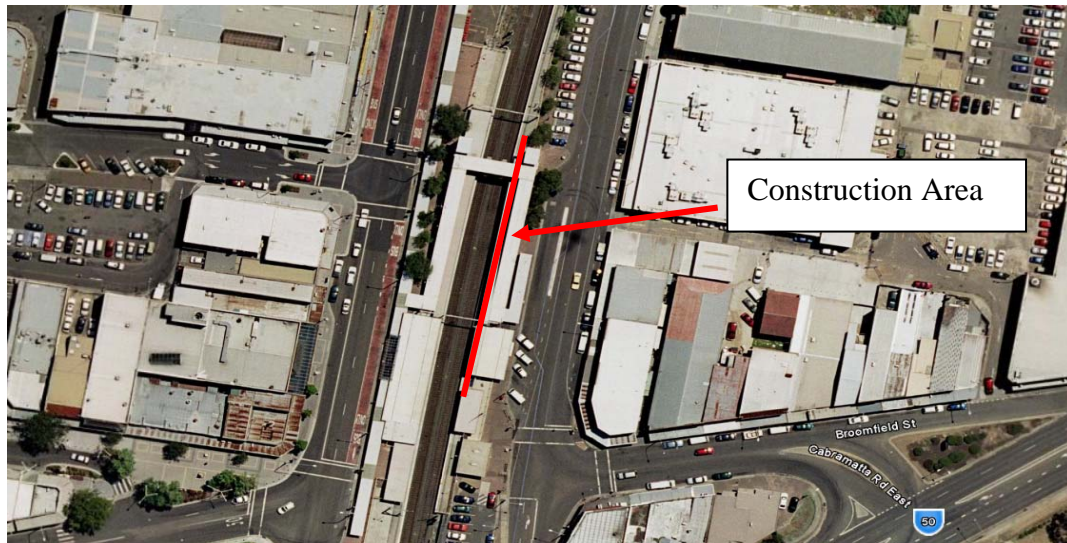
Cabramatta Station Out of Hours Works

Australian Rail Track Corporation (ARTC) will be undertaking construction works in your area over January 2010. These works are part of the construction of the Southern Sydney Freight Line (SSFL). In this area, there will be work across three consecutive weekends as detailed below:

- **2nd and 3rd January 2010** – 6.00am until 10.00pm on both Saturday and Sunday.
- **9th and 10th January 2010** - 6.00am until 10.00pm on both Saturday and Sunday.
- **16th and 17th January 2010** - 6.00am until 10.00pm on both Saturday and Sunday.

The activities at Cabramatta Station will be in relation to erection of structural beams, erection of precast stairs, demolition of existing waiting room, demolition of existing public toilets, removal of existing train radio antenna, demolition of existing ticket office and installation of new awning.

The equipment that will be used will be 100t crane, franna, oxy sets, delivery trucks, traffic management, 30t excavator, demolition tools, jack hammers and dump trucks.



We appreciate everyone's patience while we build this important project.

Further information

Phone 24 Hour Information and **Complaints** Line 1800 182 543

Email ssfl@artc.com.au or

Visit www.ssfl.artc.com.au



Translating & Interpreting Service – **Please Phone:** 131 450