



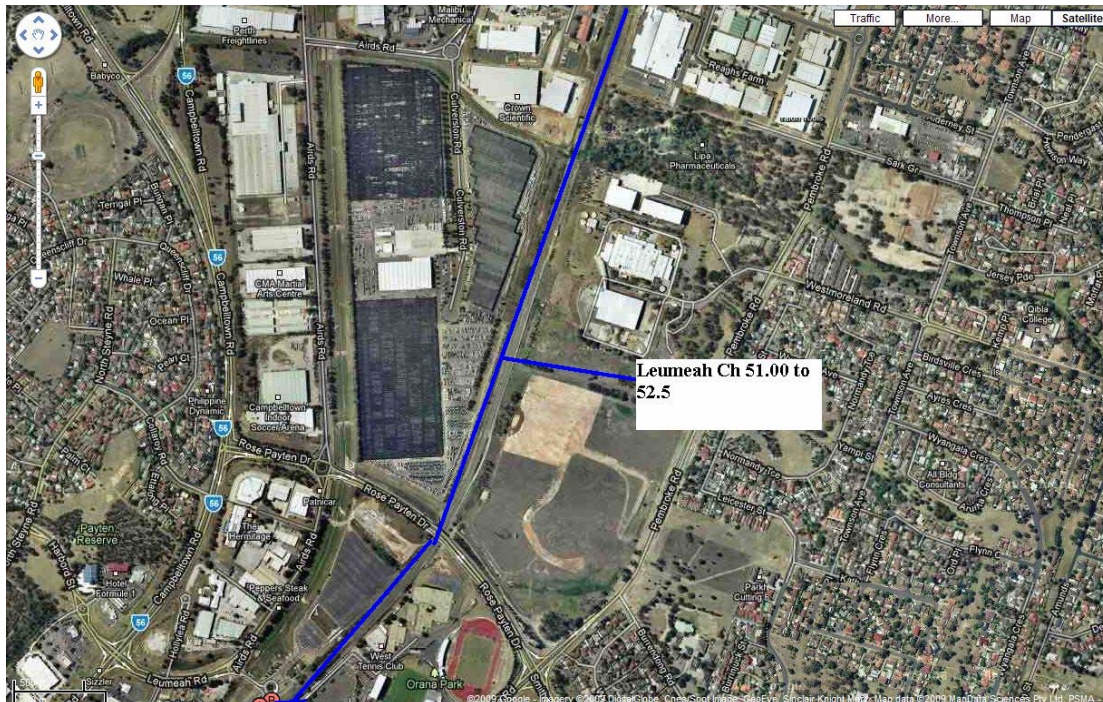
AUSTRALIAN RAIL TRACK CORPORATION LTD  
**Southern Sydney Freight Line**  
**IMPORTANT COMMUNITY INFORMATION**

**Ingleburn**

Australian Rail Track Corporation (ARTC) will be undertaking construction works in your area over the weekend of the 20<sup>th</sup> and 21<sup>st</sup> February 2010. These works are part of the construction of the Southern Sydney Freight Line (SSFL).

**Ingleburn Main South Line** – The works will take place from 7.00am until 6.00pm on both Saturday and Sunday. The works will involve over head wiring adjustments and the equipment that will be used will be hi-rail cherry pickers, 5t excavator and hi rail truck.

**Macarthur to Ingleburn** – the works will take place from 7.00am until 6.00pm on both Saturday and Sunday. The works will involve the relocation of a cable pit, the installation of a new cable route, some cable route alterations and some signalling enabling works in the area.



We appreciate everyone's patience while we build this important project.

**Further information**

For further information and any enquiries, please call the 24 Hour Information and

**Complaints Line 1800 182 543**



Or Email [ssfl@artc.com.au](mailto:ssfl@artc.com.au) or visit [www.ssfl.artc.com.au](http://www.ssfl.artc.com.au)

Translating & Interpreting Service – Please Phone: 131 450