



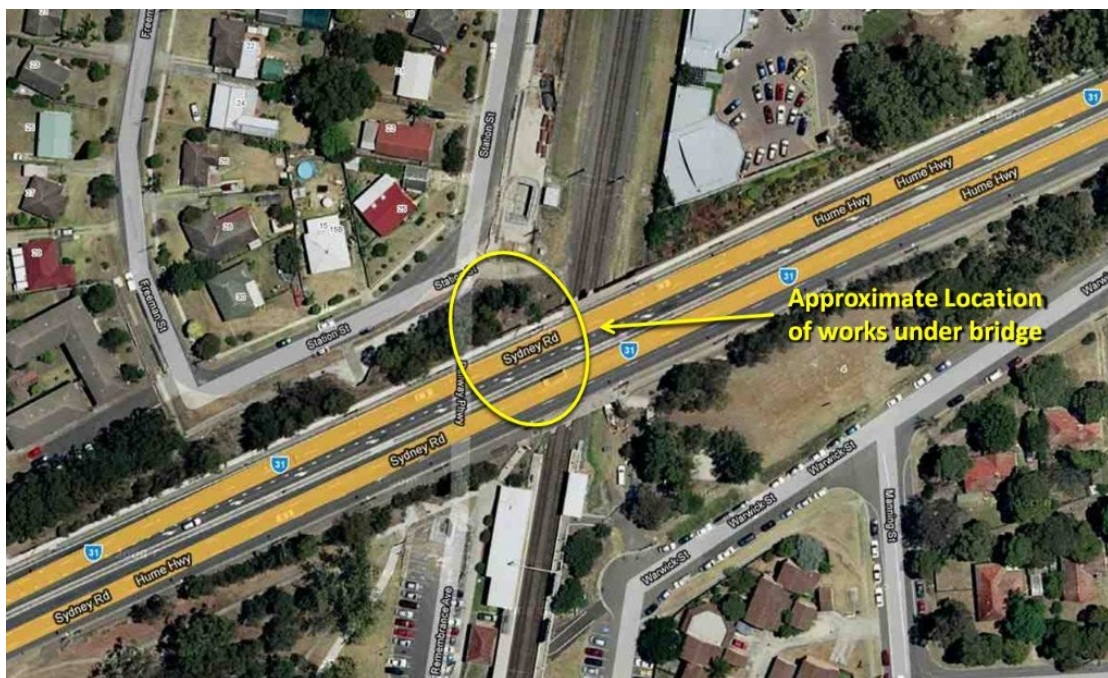
AUSTRALIAN RAIL TRACK CORPORATION LTD

Southern Sydney Freight Line IMPORTANT COMMUNITY INFORMATION

Warwick Farm Area – Weekend Works

Australian Rail Track Corporation (ARTC) will be undertaking construction works in your area over the weekend of the 31st July and 1st August 2010. These works are part of the construction of the Southern Sydney Freight Line (SSFL).

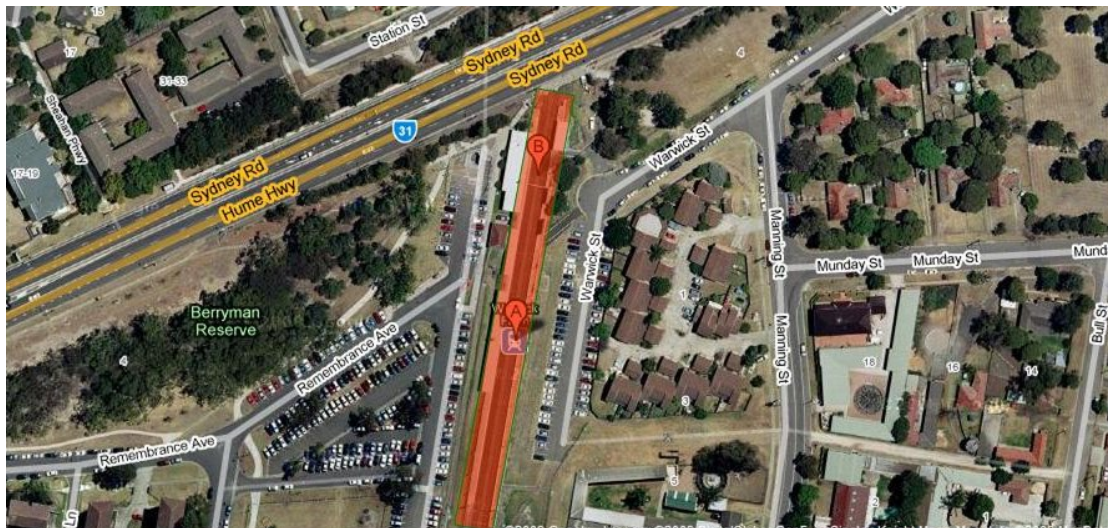
Warwick Farm Station (Hume Highway Bridge) – The works will take place from 7.00am until 5.30pm on both Saturday 31st July and Sunday 1st August 2010. The works will involve installing a cable tray on the bridge wall and installing cables on the bridge wall and through the platform. Equipment used will be three work utes, generator, hand tools, and will involve 7 people.



Warwick Farm Station – The works will take place from 2.00am on Saturday 31st July 2010 and continue until 2.00am on Monday 2nd August 2010. The works will involve a power upgrade from external power to a new padmount location, demolition of the existing waiting room, works to the platform and bridge, and installation of an awning, precast stairs and lift shafts. Equipment used will be a 30t excavator, demolition tools, pulveriser, jack hammers, oxy sets, dump trucks, compactors, scaffold, 250t crane and two hi-rails.



Warwick Farm Station – The works will take place from 7.00am until 6.00pm on both Saturday 31st July and Sunday 1st August 2010. The works will involve bonding. The equipment that will be used will be two hi-rail cherry pickers and two Manitou cranes.



We appreciate everyone's patience while we build this important project.

Further information

For further information and any enquiries, please call the 24 Hour Information and **Complaints Line 1800 182 543**



Or Email ssfl@artc.com.au or visit www.ssfl.artc.com.au

Translating & Interpreting Service – Please Phone: 131 450