



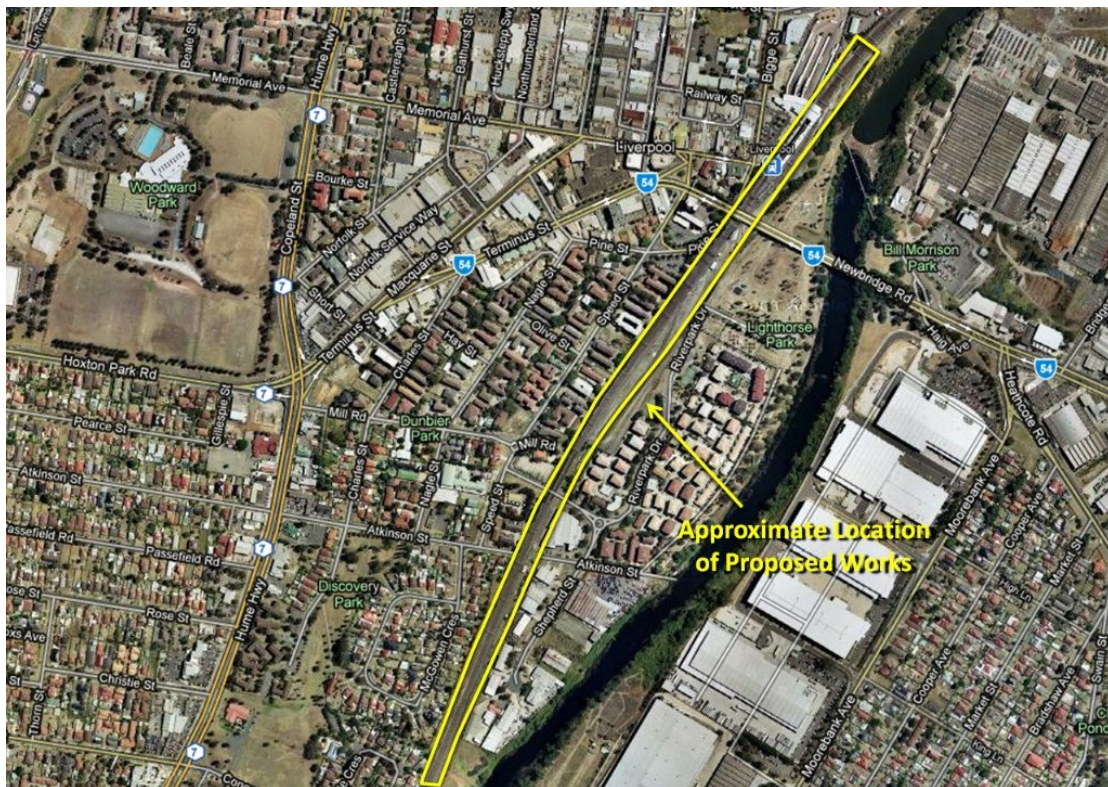
AUSTRALIAN RAIL TRACK CORPORATION LTD

Southern Sydney Freight Line IMPORTANT COMMUNITY INFORMATION

Liverpool Area – Weekend Works

Australian Rail Track Corporation (ARTC) will be undertaking construction works in your area over the weekend of the 31st July and 1st August 2010. These works are part of the construction of the Southern Sydney Freight Line (SSFL).

Liverpool South – The works will take place from 7.00am until 5.00pm on both Saturday 31st July and Sunday 1st August 2010. The works will involve the construction of a new cable route. Equipment used will be an excavator, dump truck, light vehicle, hand tools and will involve ten people.



Shepherd Street Bridge – The works will take place from 7.00am until 6.00pm on both Saturday 31st July and Sunday 1st August 2010. The works will involve the commissioning and integration of the Liverpool Section Hut into the RailCorp infrastructure. Equipment used will be hi-rail trucks and an elevated work platform.



Liverpool South – The works will take place from 7.00am until 6.00pm on both Saturday 31st July and Sunday 1st August 2010. The works will involve the installation of the Compressor Hut. Equipment used will be a 80t crane, semi-trailer truck and light vehicles.



Liverpool – The works will take place from 7.00am until 5.30pm on both Saturday 31st July and Sunday 1st August 2010. The works will involve checking and tamping previously constructed under line crossings as required. Equipment used will be hand tools, piling rig, excavator and will involve four workers.



We appreciate everyone's patience while we build this important project.

Further information

For further information and any enquiries, please call the 24 Hour Information and **Complaints Line 1800 182 543**



Or Email ssfl@artc.com.au or visit www.ssfl.artc.com.au

Translating & Interpreting Service – Please Phone: 131 450