

IMPORTANT COMMUNITY INFORMATION

GLENFIELD FLYOVER

Australian Rail Track Corporation (ARTC) will be undertaking construction works within the rail corridor in your area over the weekend of 21st and 22nd March 2009.

These works are part of the construction of the Southern Sydney Freight Line (SSFL). The works will be conducted between 7.00am on Saturday and through out the night until 7.00am on Sunday.

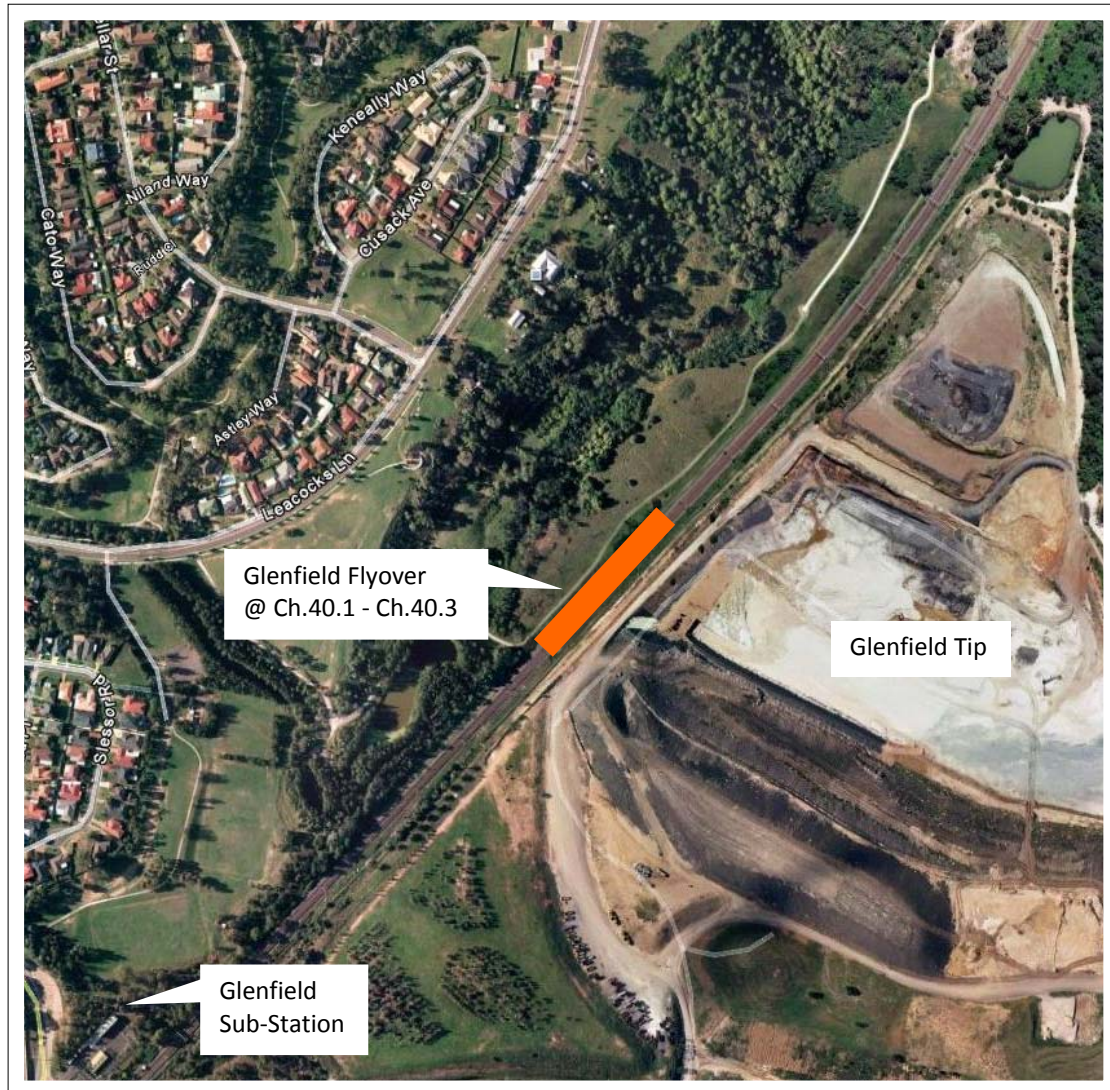
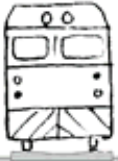
ARTC will be working in the rail corridor and will be doing preparation and piling works for the Glenfield Flyover. The equipment being used at this work location will be excavator, tray trucks, tipper trucks, roller and a bulldozer.

We appreciate everyone's patience while we build this important project for Sydney, NSW and the nation.

Further information:

Please call: **COMPLAINTS HOTLINE 1800 182 543**

Email ssfl@artc.com.au or visit www.ssfl.artc.com.au



Glenfield Flyover - BR6 @ Ch.40.1 - Ch.40.3
No potential impact to Residential Receivers)