



AUSTRALIAN RAIL TRACK CORPORATION LTD

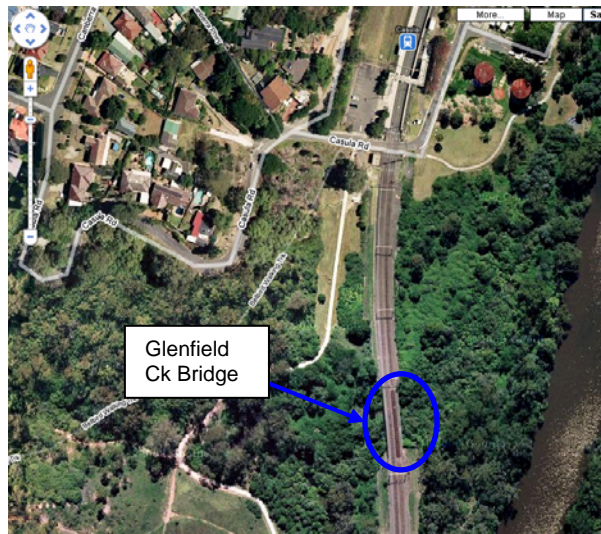
## Southern Sydney Freight Line IMPORTANT COMMUNITY INFORMATION

### Glenfield Creek Bridge

Australian Rail Track Corporation (ARTC) will be undertaking construction works the Glenfield Flyover from 7.00am until 10.00pm on Monday 3<sup>rd</sup> August through until Thursday 6<sup>th</sup> August 2009.

This work will include the installation of the large pre-cast concrete elements of Glenfield Creek Bridge including super T's, girder planks and the bridge deck unit.

The Equipment used in this area will be a 450T crane, franna crane, hand tools, concrete agitators, concrete pump truck and general construction delivery trucks.



We appreciate everyone's patience while we build this important project for Sydney, NSW and the nation.

#### Further information

For further information and any enquiries, please call the 24 Hour Information and Complaints Line **1800 182 543**



Or Email [ssfl@artc.com.au](mailto:ssfl@artc.com.au) or visit [www.ssfl.artc.com.au](http://www.ssfl.artc.com.au)

TIS 131 450