



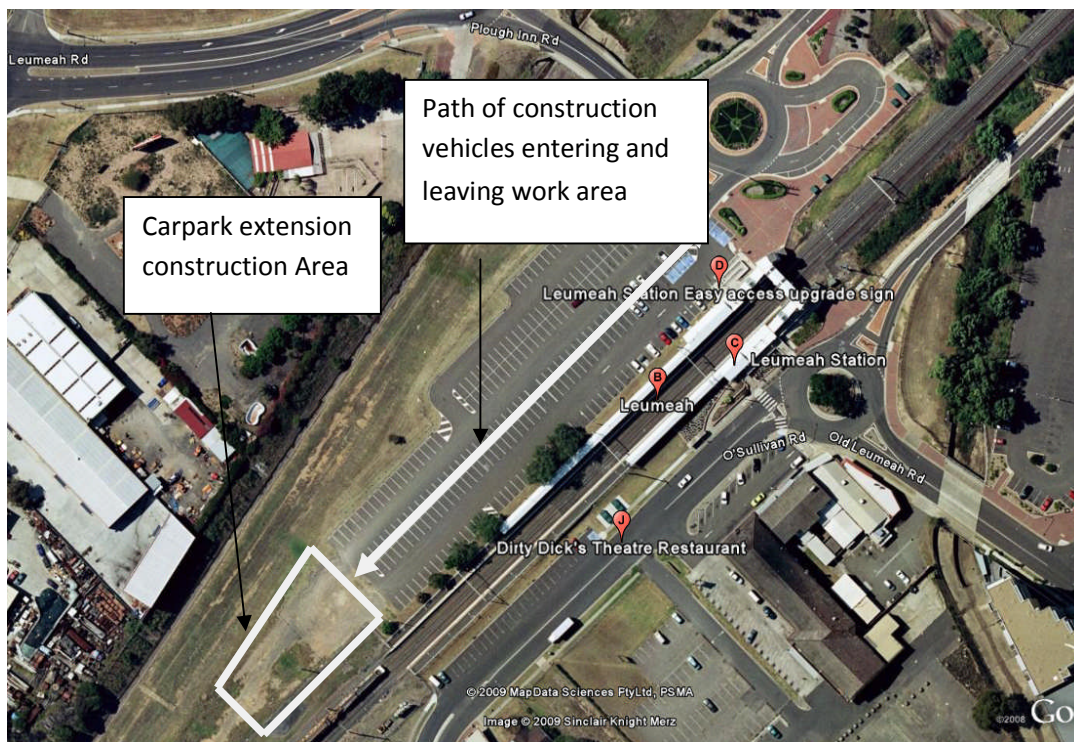
AUSTRALIAN RAIL TRACK CORPORATION LTD
Southern Sydney Freight Line

IMPORTANT COMMUNITY INFORMATION

Construction Works and Reconfiguration of Car Parking Areas at Leumeah Station

Australian Rail Track Corporation (ARTC) will be undertaking construction works at Leumeah station which involves the reconfiguration of surrounding car parking areas to ensure commuter and community car parking satisfaction.

This work is required as part of the Leumeah Station upgrade works and will involve the construction of a new customer Car park at the South-Western end of the existing Car park. Works in this area will begin from 15 September 2009 on the sections detailed below and will last approximately 8 weeks.



Further information

For further information and any enquiries, please call the 24 Hour Information and **Complaints Line 1800 182 543**



Or Email ssfl@artc.com.au or visit www.ssfl.artc.com.au

TIS 131 450