



AUSTRALIAN RAIL TRACK CORPORATION LTD

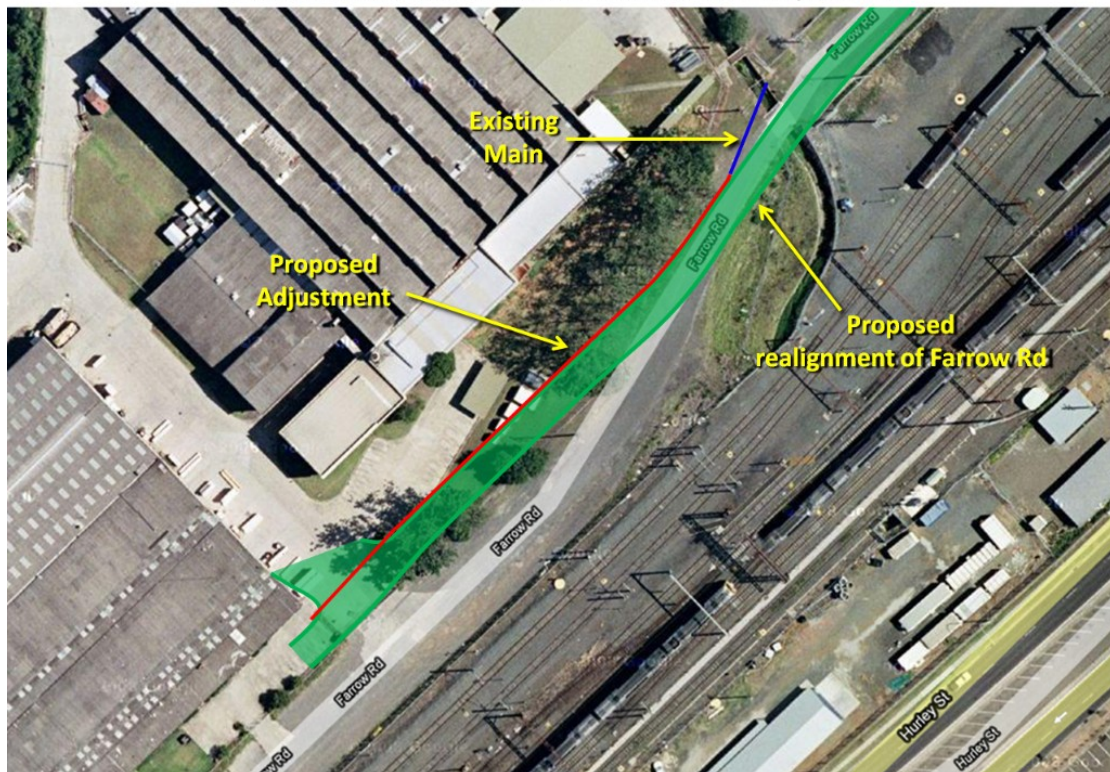
Southern Sydney Freight Line IMPORTANT COMMUNITY INFORMATION

Water Main & Sewer Underbore at Farrow Road Campbelltown

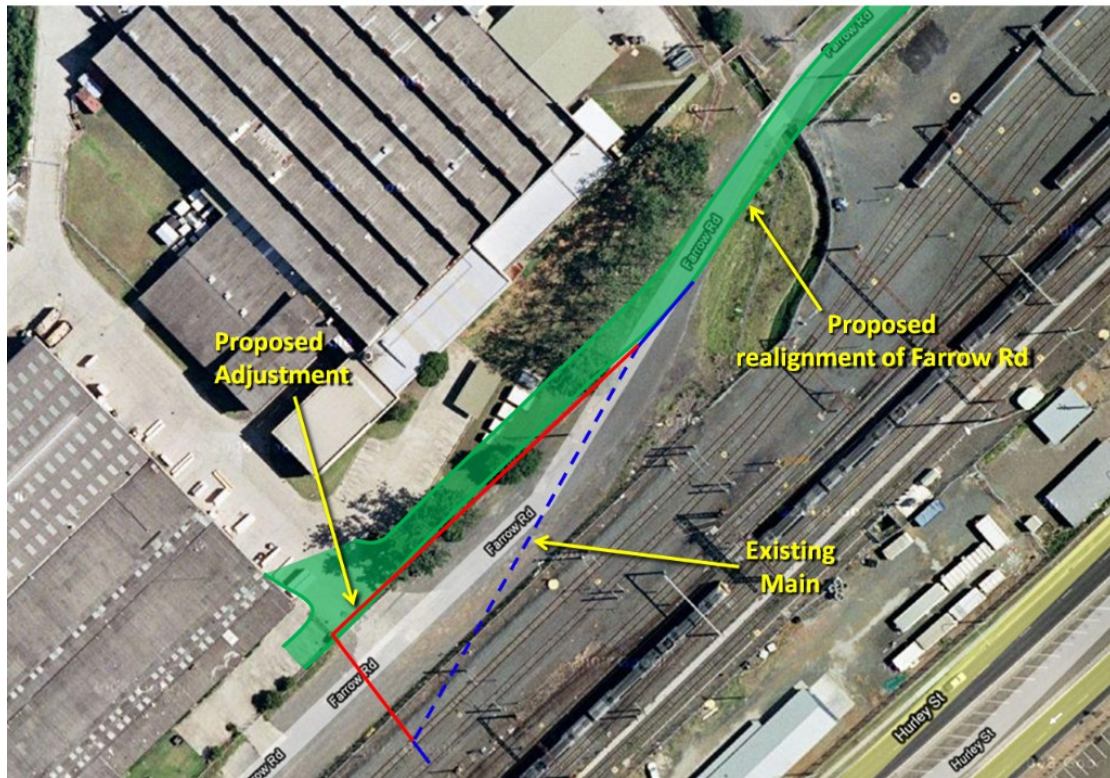
Australian Rail Track Corporation (ARTC) will be installing a new Sydney Water water main and Sewer Main at Farrow Road underneath the railway line near Campbelltown Station as part of the SSFL works. This will replace the existing water main and sewer main that is in the way of the new Southern Sydney Freight Line. The works includes an underbore beneath the railway line as well as local excavation and trenching to connect to the existing water main. These works will begin on the 15th March 2010 and will continue for approximately 8 weeks. The work however will not occur continuously over the period of 8 weeks.

There will be traffic control in place to manage the traffic and the pedestrian movements around the worksite. The equipment on site will include an excavator, a boring machine, welder, jack hammer, concrete mixer, work vehicles, hand tools and traffic control.

W70 SWC Watermain extension at Farrow Rd, Campbelltown



W70a SWC Sewerage deviation at Farrow Rd, Campbelltown



For **further information** and any enquiries, please call the **Complaints Line 1800 182 543**



Or Email ssfl@artc.com.au or visit www.ssfl.artc.com.au

Translating & Interpreting Service – **Please Phone:** 131 450