



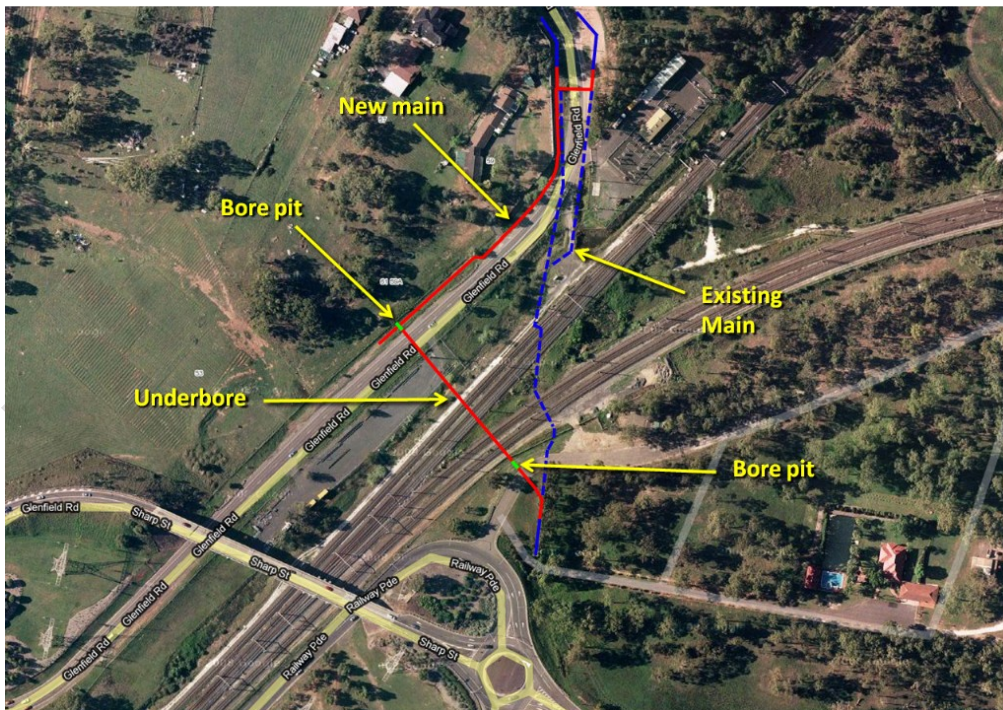
AUSTRALIAN RAIL TRACK CORPORATION LTD

Southern Sydney Freight Line IMPORTANT COMMUNITY INFORMATION

Glenfield Junction Out of Hours Works

Australian Rail Track Corporation (ARTC) will be undertaking construction works at Glenfield Junction on Saturday 8th and Sunday 9th May 2010 from 7.00am until 6.00pm. Depending on how the construction works are progressing, further work may be carried out on either the 15th and 16th May or 22nd and 23rd May 2010 from 7.00am until 6.00pm. These works are part of the construction of the Southern Sydney Freight Line (SSFL). The works will consist of underboring. The equipment used at this location will be a directional bore, excavator, dumpy and hand tools.

W53a/W54 SWC underbore at Glenfield Junction – Rev 05



We appreciate everyone's patience while we build this important project.

Further information

Phone 24 Hour Information and **Complaints** Line 1800 182 543

Email ssfl@artc.com.au or

Visit www.ssfl.artc.com.au



Translating & Interpreting Service – **Please Phone:** 131 450