



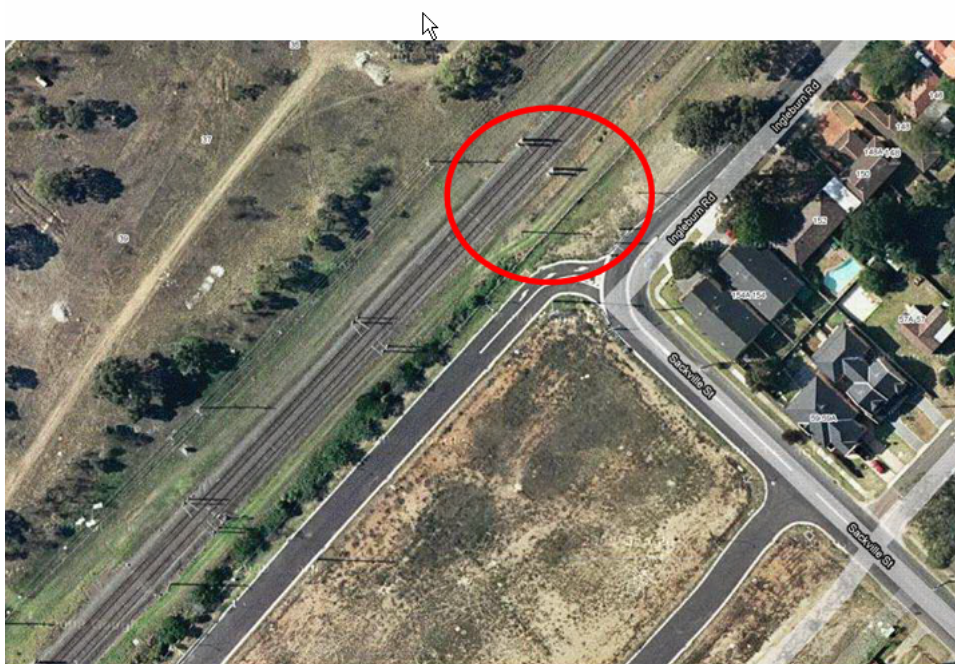
AUSTRALIAN RAIL TRACK CORPORATION LTD
Southern Sydney Freight Line

Underbore at Sackville Street, Ingleburn

Australian Rail Track Corporation (ARTC) will be carrying out the installation of Integral Energy 11kv feeders. This will replace the existing Integral Energy asset that is in the way of the new Southern Sydney Freight Line. The works include an underbore beneath the railway line as well as local excavation and trenching to connect to the existing joint bays.

Enabling works will begin on 19th May 2010, with the main construction of the underbore beginning on the 28th May 2010. The works will continue at this location for approximately 8 weeks. There will be traffic impacts due to these works and traffic controllers will be in place to manage the local traffic and pedestrian movements. The equipment onsite will be boring machine, excavator, cable truck, jack hammer, concrete mixer, work vehicles and hand tools.

Integral Energy Relocation



These works form part of the construction of the Southern Sydney Freight Line (SSFL). We appreciate everyone's patience while we build this important project.

Further information:

Phone 24 Hour Information and **Complaints** Line 1800 182 543

Email ssfl@artc.com.au or Visit www.ssfl.artc.com.au



Translating & Interpreting Service – **Please Phone:** 131 450