

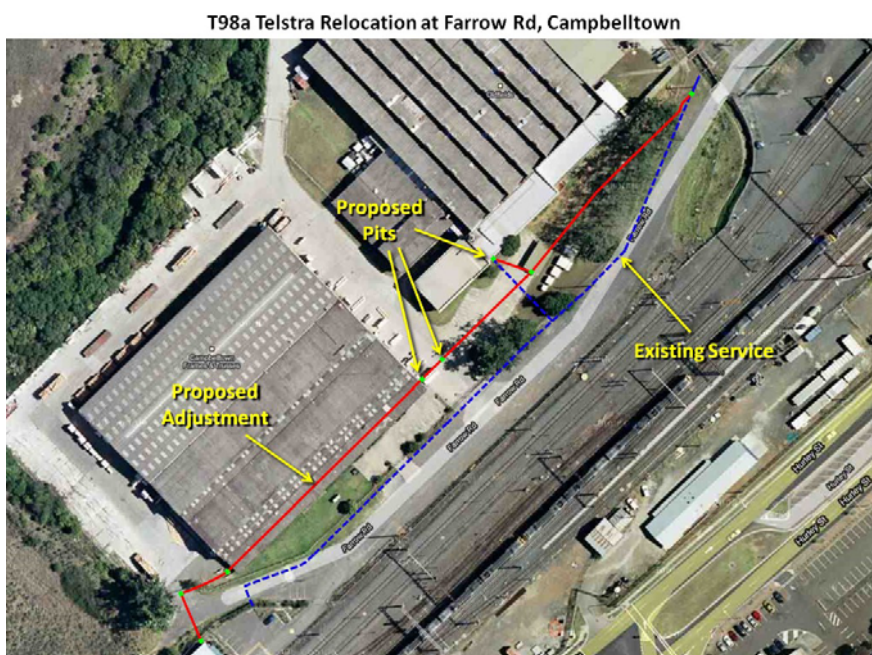


AUSTRALIAN RAIL TRACK CORPORATION LTD

Southern Sydney Freight Line IMPORTANT COMMUNITY INFORMATION

Telstra Relocation - Farrow Road, Campbelltown

Australian Rail Track Corporation (ARTC) will be relocating a Telstra network along Farrow Road near Campbelltown Station. This will replace the existing Telstra network that is in the way of the new Southern Sydney Freight Line. These works include local excavation and trenching, an underbore and cable hauling, to connect to existing Telstra network. The works will begin on 14th June 2010 and will be carried out in approved project hours, and will continue for approximately 8 weeks. Pedestrian and public traffic movements will be impacted due to these works and traffic control will manage the movement around the worksite. These works are part of the construction of the Southern Sydney Freight Line (SSFL). The equipment used at this location will be a boring machine, excavator, welder, jack hammer, concrete mixer, work vehicles and hand tools.



We appreciate everyone's patience while we build this important project.

Further information

Phone 24 Hour Information and **Complaints** Line 1800 182 543

Email ssfl@artc.com.au or

Visit www.ssfl.artc.com.au



Translating & Interpreting Service – **Please Phone:** 131 450