



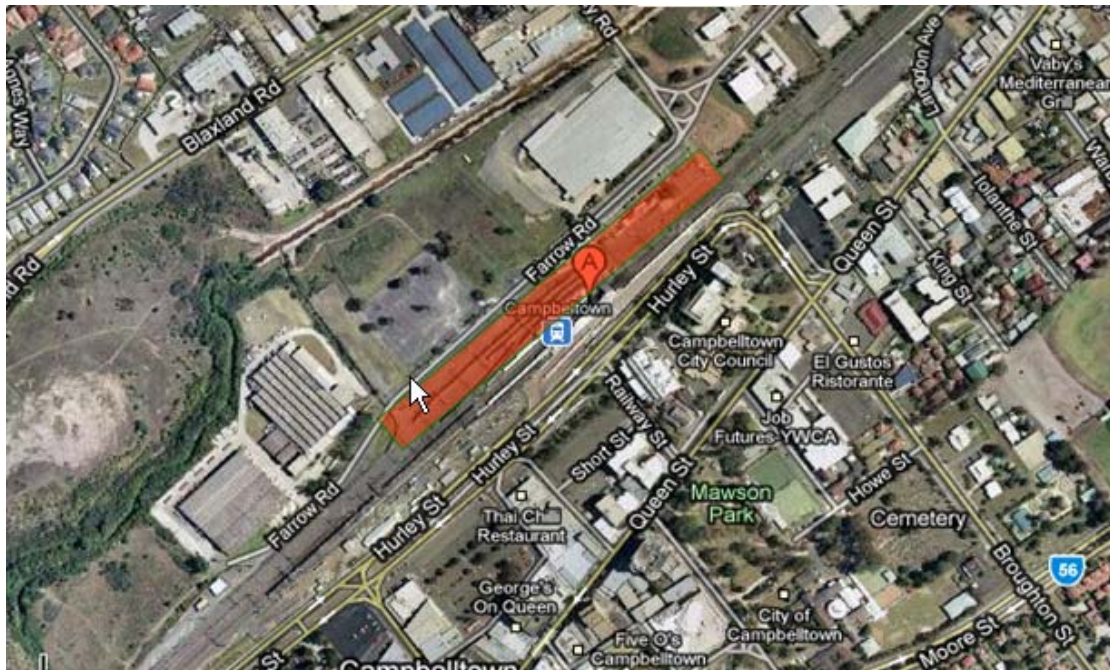
AUSTRALIAN RAIL TRACK CORPORATION LTD

## Southern Sydney Freight Line IMPORTANT COMMUNITY INFORMATION

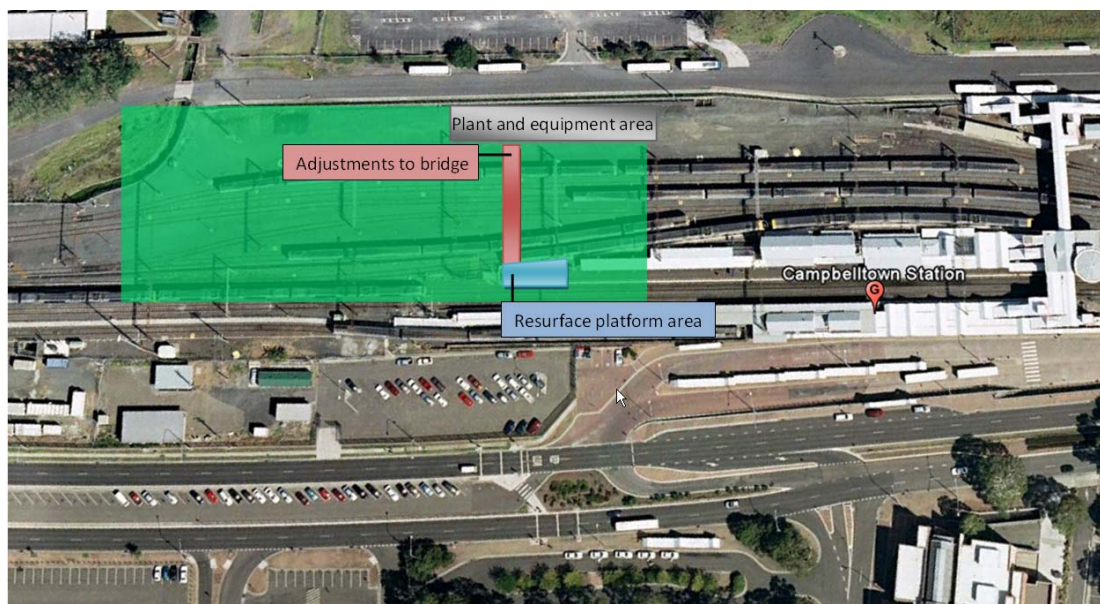
### Campbelltown Area – Weekend Works

Australian Rail Track Corporation (ARTC) will be undertaking construction works in your area over the weekend of the 19<sup>th</sup> and 20<sup>th</sup> June 2010. These works are part of the construction of the Southern Sydney Freight Line (SSFL).

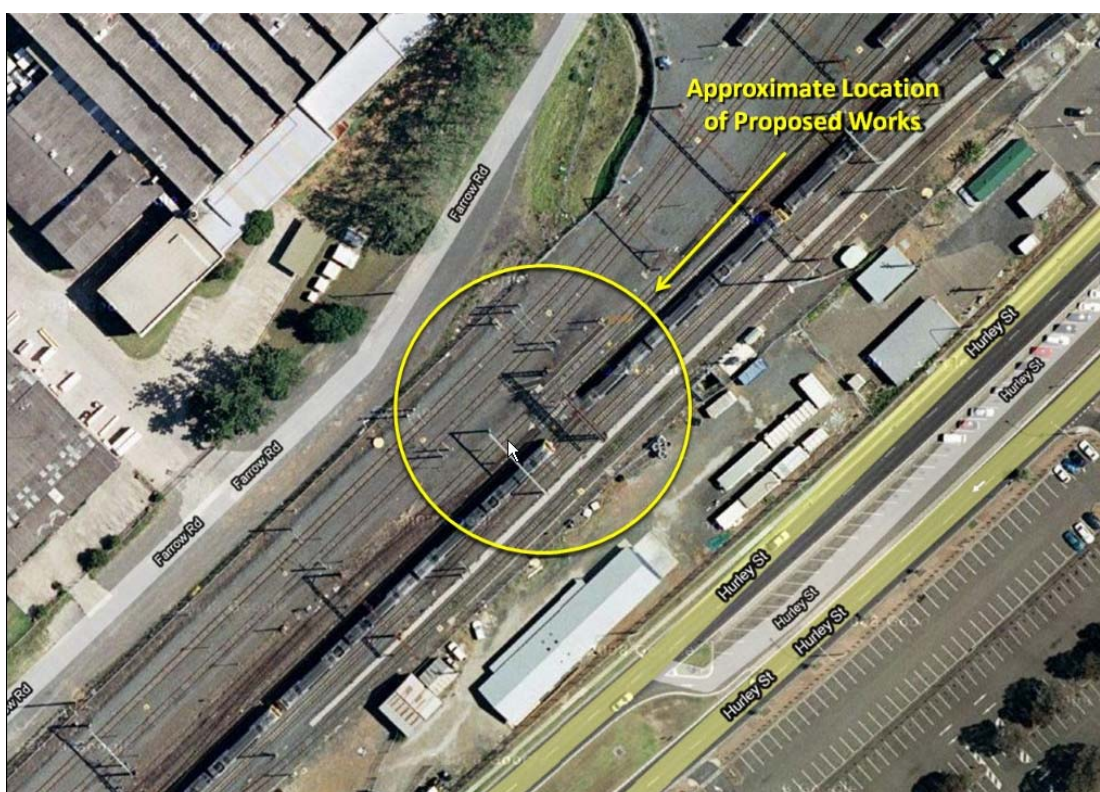
**Campbelltown Yard Track Works** – The works will take place from 6.00am until 8.00pm on both Saturday 19<sup>th</sup> June and Sunday 20<sup>th</sup> June 2010. The works will involve the removal of perway siding. The equipment used will be 2 x front end loaders, rail saw, semi trailer, small hand tools, 16t excavator, water cart and street sweeper.



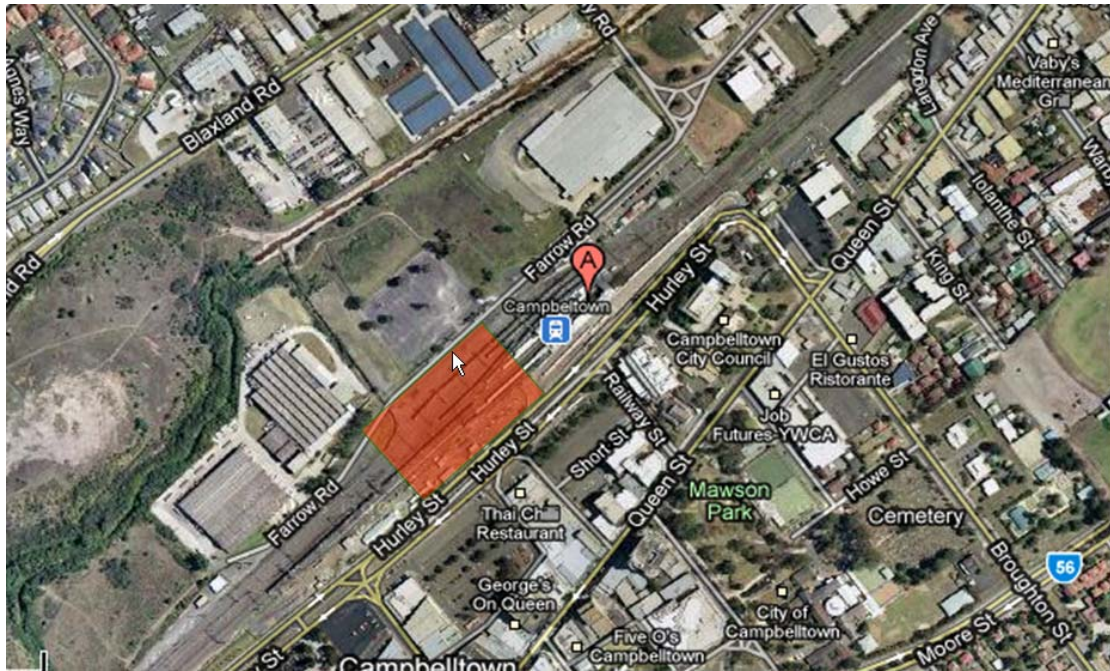
**Campbelltown Station** – The works will take place from 02.00am on Saturday 19<sup>th</sup> June until 2.00am Monday 21<sup>st</sup> June. The works will involve resurfacing the area of platform adjacent to stair number 3 and carrying out adjustments to bridge. The equipment used will be 20t franna, hand tools, delivery trucks, oxy sets and generators.



**Campbelltown** – The works will take place from 7.00am until 5.00pm on both Saturday 19<sup>th</sup> and Sunday 20<sup>th</sup>. The works will involve the removal of pole stumps at Farrow Road and Hurley Street Campbelltown. The equipment used will be stump grinder and site vehicles.



**Campbelltown Yard** – The works will take place from 6.00am until 6.00pm on both Saturday 19<sup>th</sup> and Sunday 20<sup>th</sup> June. The works will involve new signalling installation, pot holing of existing buried cable routes, excavating cable route trenches and installation of under line crossings. The equipment used will be site vehicles, 2 x excavators, non-destructive high pressure jet blaster and vacuum plant, tipper trucks, dump trucks and bobcat.



We appreciate everyone's patience while we build this important project.

#### **Further information**

For further information and any enquiries, please call the 24 Hour Information and **Complaints Line 1800 182 543**



Or Email [ssfl@artc.com.au](mailto:ssfl@artc.com.au) or visit [www.ssfl.artc.com.au](http://www.ssfl.artc.com.au)

Translating & Interpreting Service – Please Phone: 131 450