



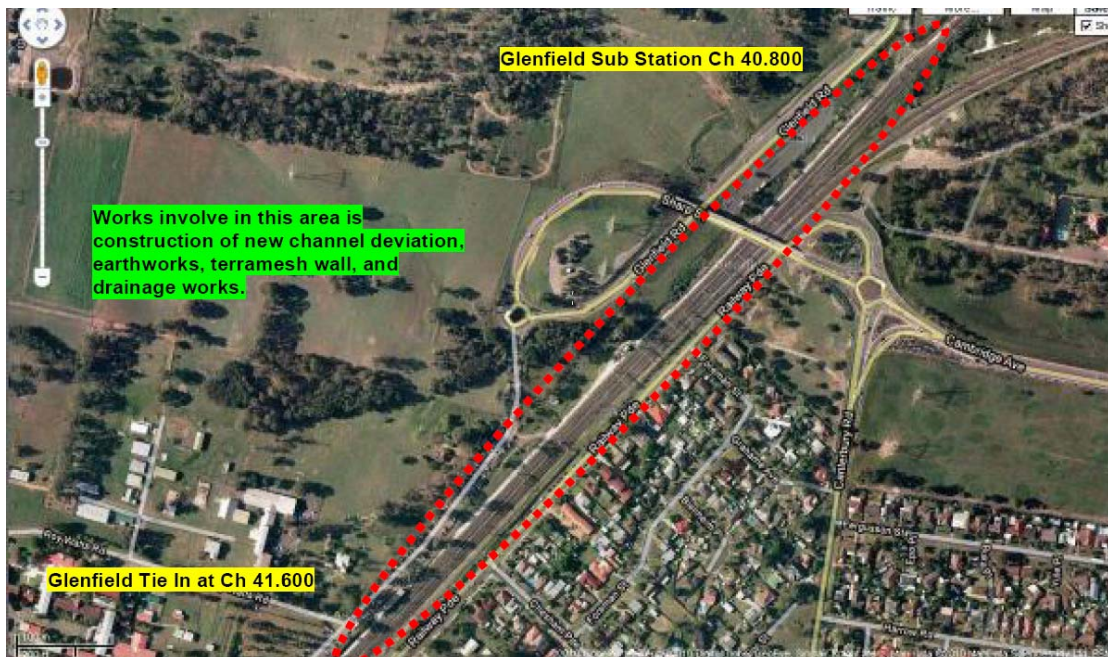
AUSTRALIAN RAIL TRACK CORPORATION LTD

Southern Sydney Freight Line IMPORTANT COMMUNITY INFORMATION

Glenfield Tie In

Australian Rail Track Corporation (ARTC) will be undertaking construction works in your area over the weekend of the 19th and 20th June 2010. These works are part of the construction of the Southern Sydney Freight Line (SSFL).

The works will take place from 8.00am on Saturday 19th June and continue until 10.00pm on Sunday 20th June 2010. The works will involve earthworks, construction of drainage works and installation of CSR route. The equipment used will be excavators, rollers, graders, tipper trucks, bobcats, forklift trucks, water cart, knuckle booms, working platforms, hand tools, lighting towers, bogies, truck and dog, concrete truck and concrete pump.



We appreciate everyone's patience while we build this important project.

Further information

For further information and any enquiries, please call the 24 Hour Information and

Complaints Line 1800 182 543



Or Email ssfl@artc.com.au or visit www.ssfl.artc.com.au

Translating & Interpreting Service – Please Phone: 131 450