



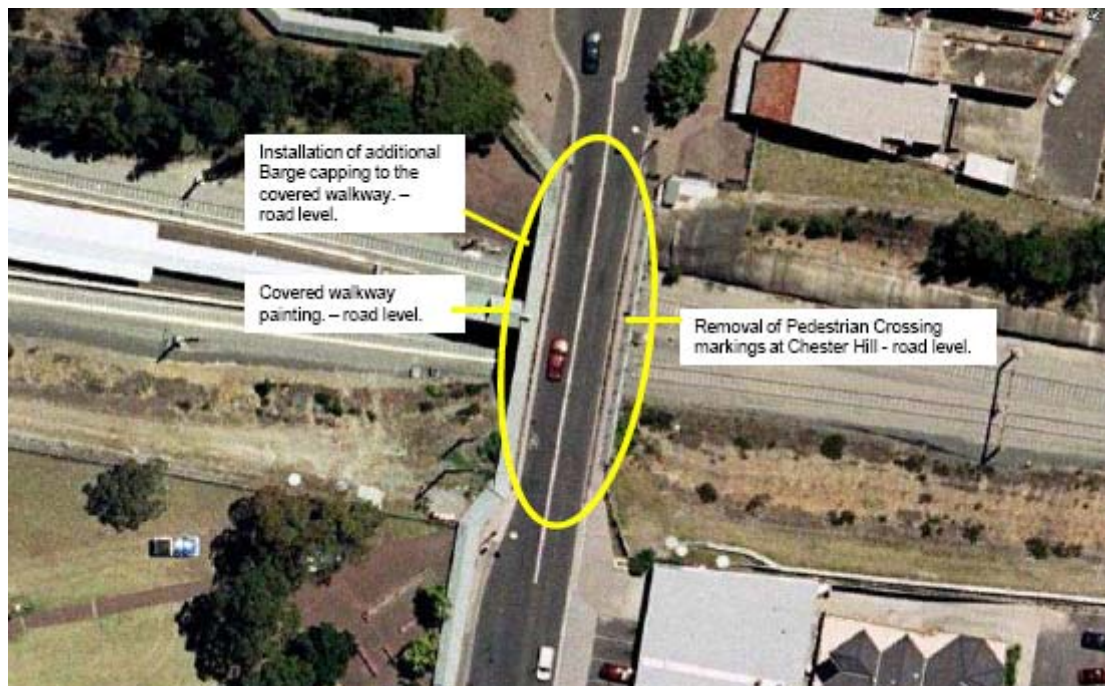
AUSTRALIAN RAIL TRACK CORPORATION LTD

Southern Sydney Freight Line IMPORTANT COMMUNITY INFORMATION

Chester Hill Area – Weekend Works

Australian Rail Track Corporation (ARTC) will be undertaking construction works in your area over the weekend of the 24th and 25th July 2010. These works are part of the construction of the Southern Sydney Freight Line (SSFL).

Chester Hill Overbridge – The works will take place from 7.00am and continue until 5.00pm on Saturday 24th July and Sunday 25th July 2010. The works will involve the installation of additional barge capping to the covered walkway, the removal of pedestrian crossing markings at Chester Hill Road level and painting of covered walkways. The following equipment will be used: hand tools, high pressure gennie, traffic control, EWP, scaffold and compressor.



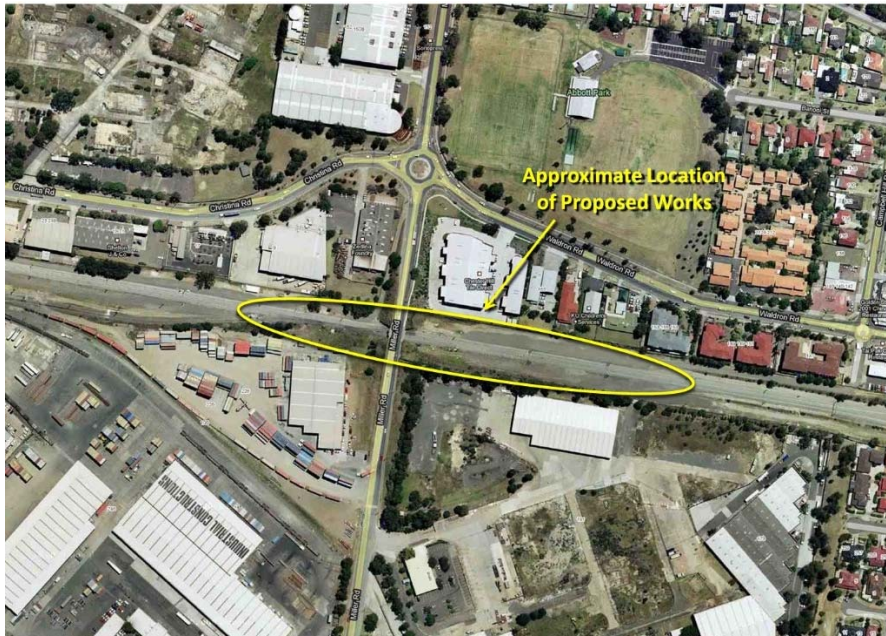
Chester Hill – The works will take place from 2.00am Saturday 24th July and continue until 11.59 pm on Sunday 25th July 2010. The works will involve the bore undertrack crossing for Sydney Water watermain Campbell Hill Road. The equipment that will be used will be an excavator, dump truck, light vehicle, directional bore, hand tools and ten people.



Chester Hill – The works will take place from 7.00am and continue until 5.00pm on Saturday 24th July and Sunday 25th July 2010. The works will involve the construction of a new cable route. The equipment that will be used will be an excavator, dump truck, light vehicle, hand tools, 50t crane and it will involve ten people.



Sefton Junction – The works will take place from 7.00am and continue until 5.30pm on Saturday 24th July and Sunday 25th July 2010. The works will involve a signal relocation. The equipment that will be used will be an excavator, dump truck, light vehicle, hand tools, sucker truck, and hiab truck.



We appreciate everyone's patience while we build this important project.

Further information

For further information and any enquiries, please call the 24 Hour Information and **Complaints Line 1800 182 543**



Or Email ssfl@artc.com.au or visit www.ssfl.artc.com.au

Translating & Interpreting Service – Please Phone: 131 450