



AUSTRALIAN RAIL TRACK CORPORATION LTD

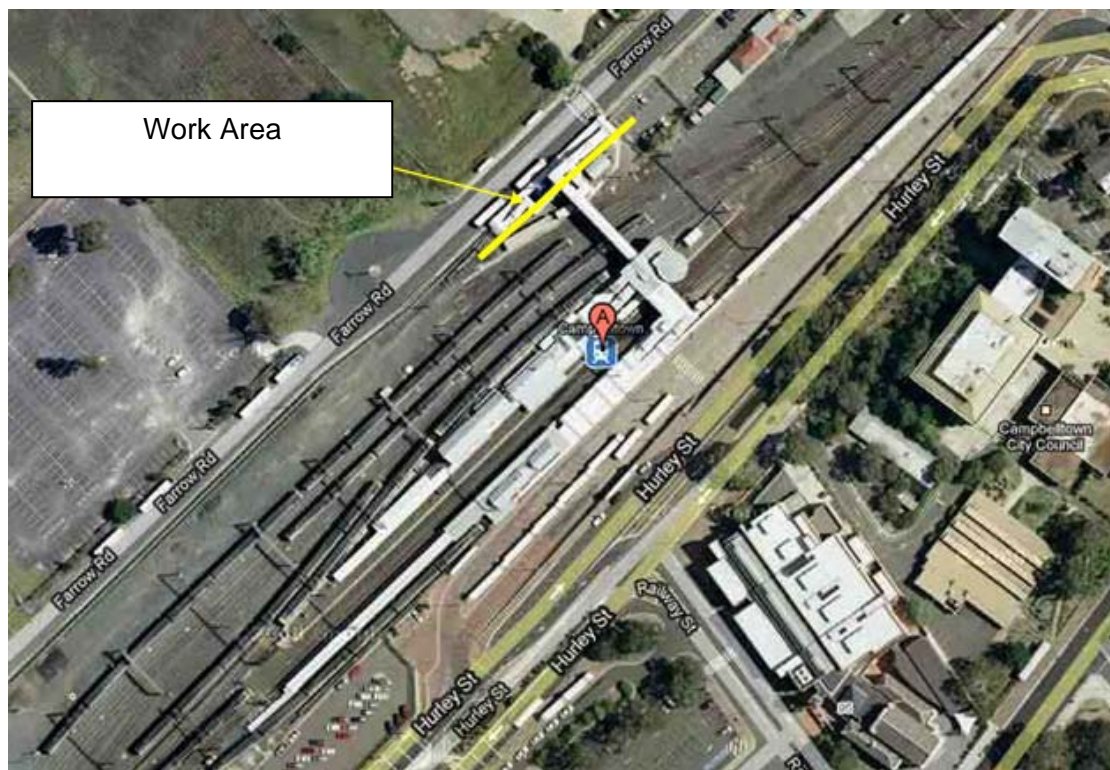
## Southern Sydney Freight Line IMPORTANT COMMUNITY INFORMATION

### Campbelltown Area – Weekend Works

Australian Rail Track Corporation (ARTC) will be doing construction works in your area as part of the SSFL works.

#### **Campbelltown Station**

The works include the installation of new high voltage cables and joint cables, and cutover services and testing. Construction work will take place from 3am Saturday 21st August 2010 to 2am Monday 23rd August 2010. The equipment on site will include an excavator, dumpy, road vehicles, lighting towers, elevated work platform and hand tools.



## Campbelltown

The works include the installation of an underline crossing cut. Construction work will take place from 6am to 10pm on both Saturday 21st August 2010 and Sunday 22nd August 2010. The equipment on site will include site vehicles, excavator and dumper truck.

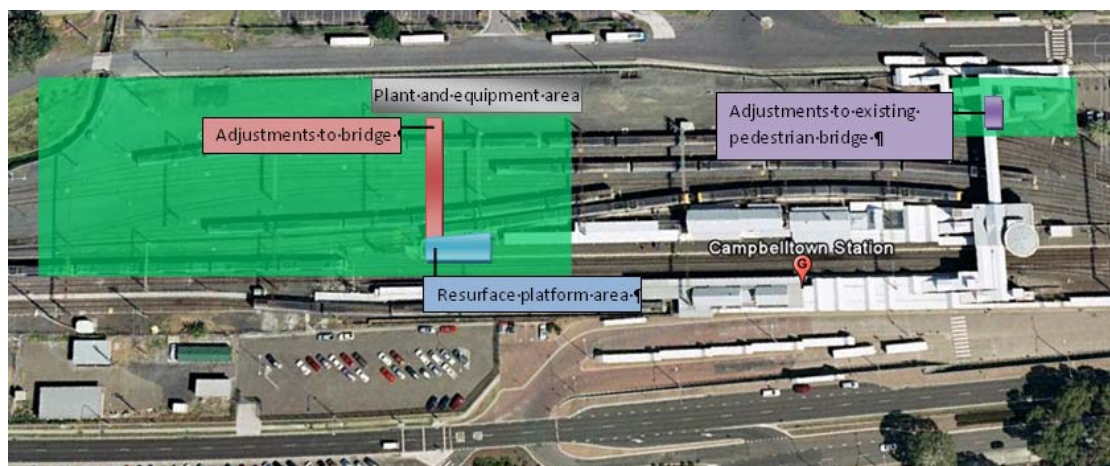


## Campbelltown Yard (Main South Line)

The works include the installation of smoke screens on Campbelltown Footbridge and footings for new overhead wiring structures. Construction work will take place from 7am to 5pm on both Saturday 21st August 2010 and Sunday 22nd August 2010. The equipment on site will include two 8t excavators, and two Manitou cranes.

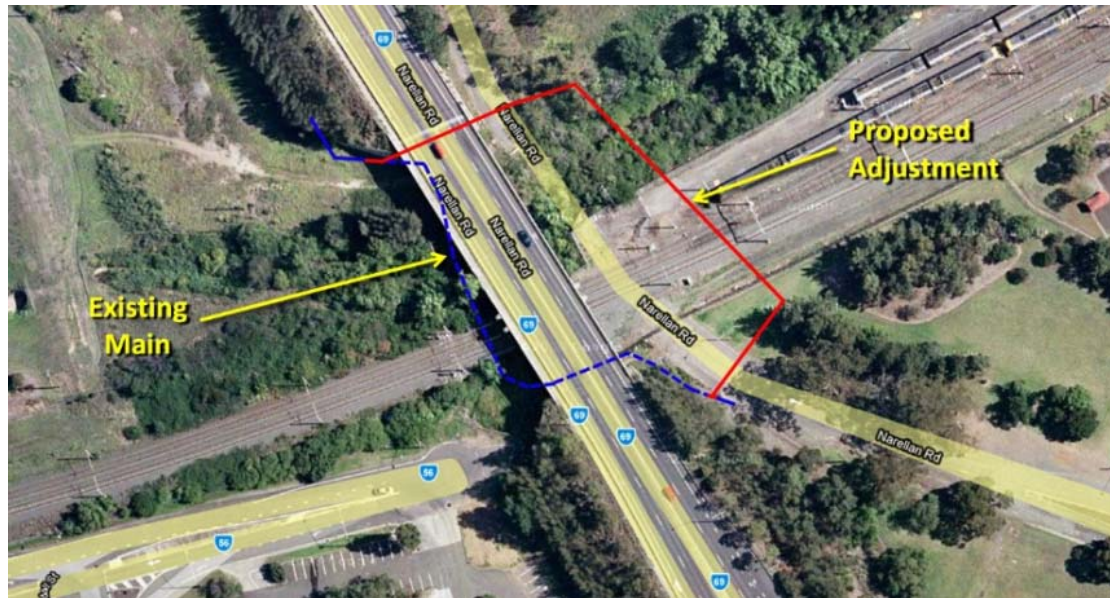
## Campbelltown

The works include adjustments to the staff footbridge and to the platform (country end adjacent to the driver's bridge). Construction work will take place from 2am Saturday 21st August 2010 to 2am Monday 23rd August 2010. The equipment on site will include a 20t franna crane, hand tools, delivery trucks, oxy sets, generators, scaffolding and an elevated work platform.



## Campbelltown

The works include boring an undertrack crossing for the Sydney Water main at Narellan Road. Construction work will take place from 3am Saturday 21st August 2010 to 2am Monday 23rd August 2010. The equipment on site will include a directional bore, excavator, dumpy, road vehicles, hand tools and lighting towers.



We appreciate everyone's patience while we build this important project.

### Further information

For further information and any enquiries, please call the 24 Hour Information and Complaints Line **1800 182 543**



Or Email [ssfl@artc.com.au](mailto:ssfl@artc.com.au) or visit [www.ssfl.artc.com.au](http://www.ssfl.artc.com.au)

Translating & Interpreting Service – Please Phone: 131 450