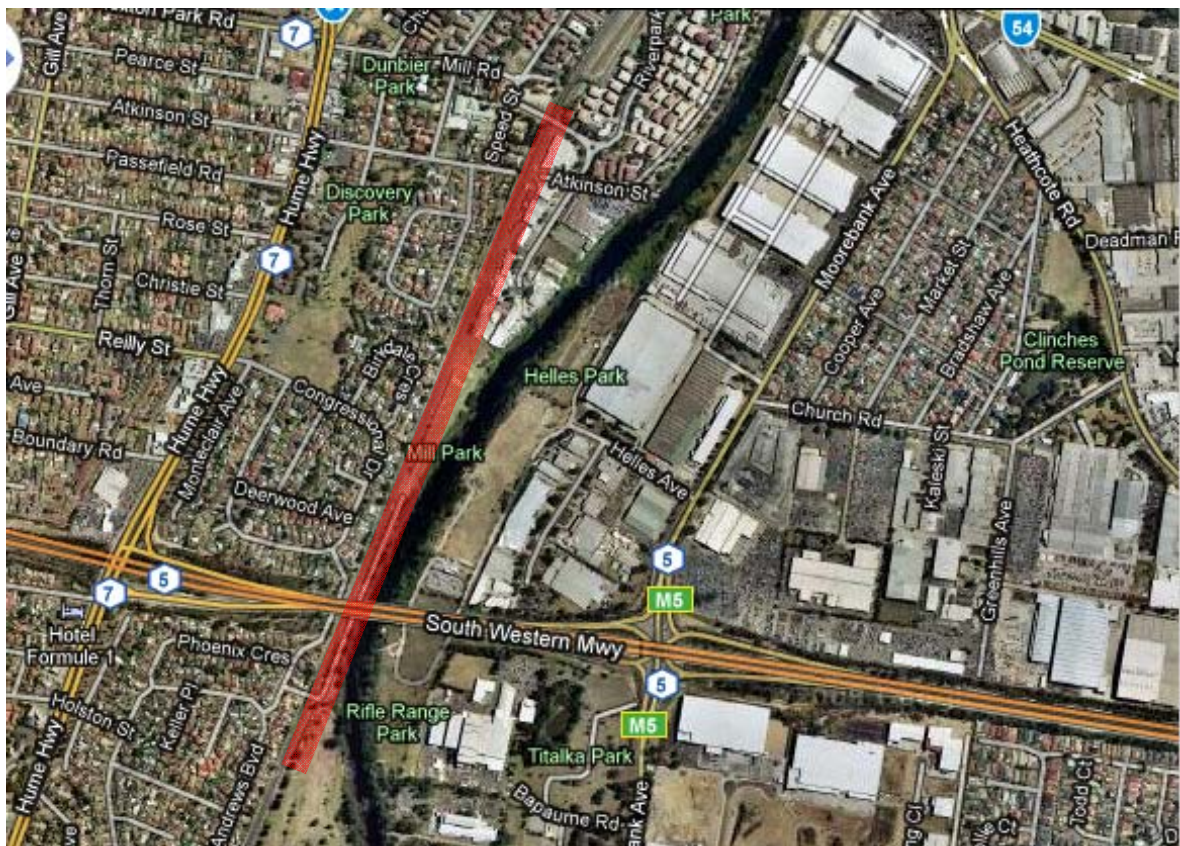


Southern Sydney Freight Line IMPORTANT COMMUNITY INFORMATION

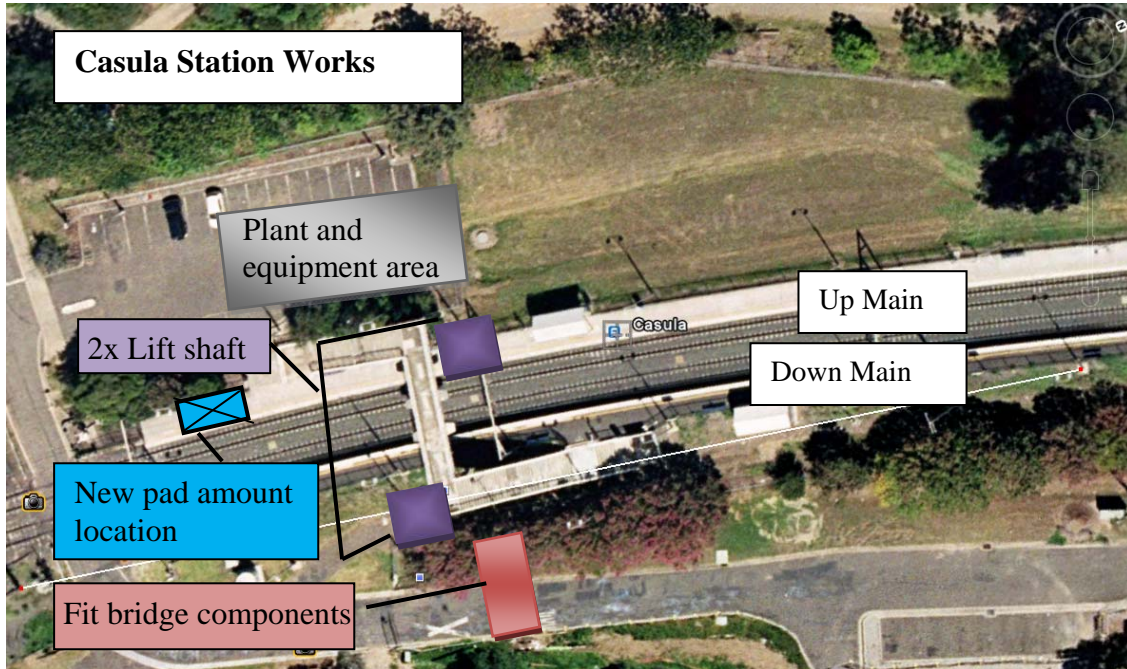
Warwick Farm to Casula – Weekend Works

Australian Rail Track Corporation (ARTC) will be undertaking construction works in your area over the weekend of the 16th and 17th October 2010. These works are part of the construction of the Southern Sydney Freight Line (SSFL).

Warwick Farm to Casula - The works will include earthworks, the placing and compacting of fill on Casula Road and the construction of retaining walls. These will take place on Saturday 16th October 2010 and Sunday 17th October 2010 from 7am to 6pm. The equipment used will include excavator, mobile cranes, trucks, concrete trucks, concrete pumps, roller, piling/sheet piling rigs and hand tools.



Casula Station – The works will include extension of deflection wall, works to the lift shafts and footbridge and a power upgrade. These works will take place from 2.00am on Friday 15th October 2010 through until 2.00am on Monday 18th October 2010. The equipment used will include 100t crane, 20t franna, scaffold, scissor lift, hand tools, delivery trucks, oxy sets and generator.



We appreciate everyone's patience while we build this important project.

Further information

For further information and any enquiries, please call the 24 Hour Information and Complaints Line 1800 182 543



Or Email ssfl@artc.com.au or visit www.ssfl.artc.com.au

Translating & Interpreting Service – Please Phone: 131 450