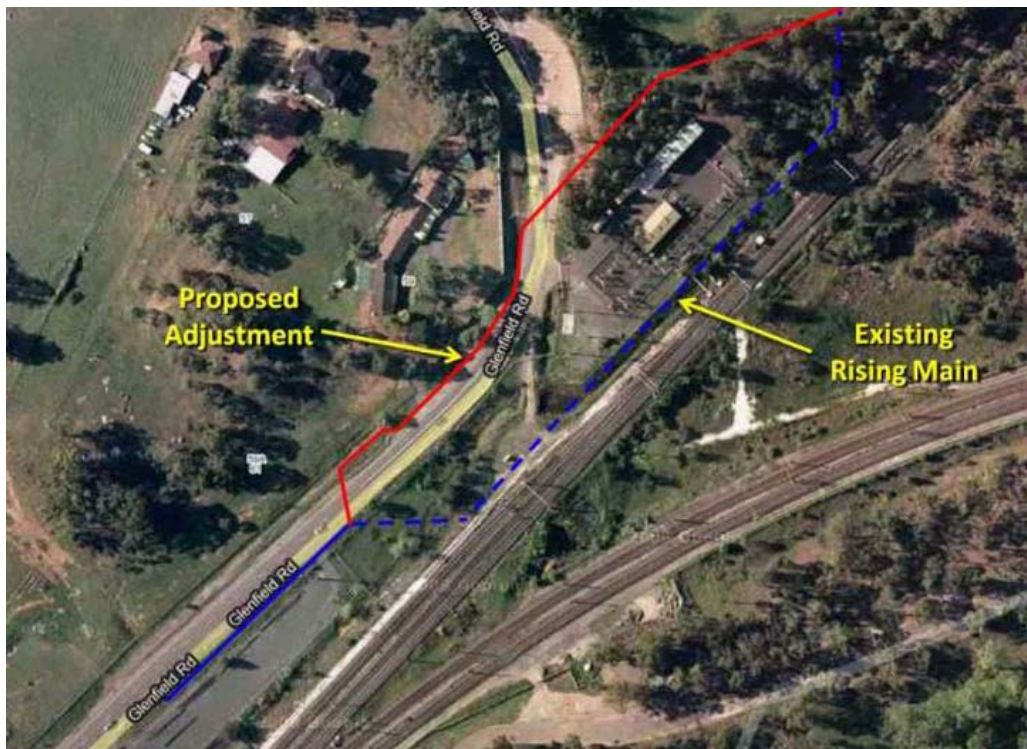




AUSTRALIAN RAIL TRACK CORPORATION LTD
Southern Sydney Freight Line
COMMUNITY INFORMATION

Construction work at Glenfield Road, Glenfield

Australian Rail Track Corporation (ARTC) will be relocating a new Sydney Water sewer rising main at Glenfield Road, Glenfield. The works include construction of an underbore beneath Glenfield Road, and excavation and trenching to connect the new sewer main to the existing sewer main. The works will be undertaken from 7am to 6pm from the 25th October 2010, and will continue intermittently for approximately 12 weeks. The equipment that will be used are a boring machine, excavator, welder, jack hammer, concrete mixer, work vehicles and hand tools. There will be traffic controls in place on Glenfield Road to manage traffic and pedestrian movements around the worksite. Towards the end of the construction process Sydney Water will undertake capacity and flow tests at the nearest sewer pump station further along Glenfield Rd. On successful completion of these flow tests, Sydney Water will connect the relocated sewer main with the existing sewer main. Any Disruption Notices will be issued by Sydney Water.



We appreciate everyone's patience while we build this important project for Sydney, NSW and the nation.

Further information please phone 24 Hour Information and **Complaints** Line 1800 182 543

Email ssfl@artc.com.au or Visit www.ssfl.artc.com.au



Translating & Interpreting Service – **Please Phone:** 131 450