



AUSTRALIAN RAIL TRACK CORPORATION LTD

## **Southern Sydney Freight Line IMPORTANT COMMUNITY INFORMATION**

### **Leumeah, Campbelltown and Glenlee – Weekend Works**

Australian Rail Track Corporation (ARTC) will be undertaking construction work in your area. These works must be undertaken outside normal construction hours because of the safety risks involved with working in close proximity to overhead power and rail track.

#### **Leumeah to Campbelltown**

The works will be undertaken on Sunday 2, Monday 3, Saturday 8, Sunday 9, Saturday 15 and Sunday 16 January 2011 from 7am to 10pm. The works will include installing, changing over and commissioning communications cables (Combined Services Route Zone 2). The equipment required for these works include site vehicles, winches, generators, and non-powered hand tools including screw drivers, pliers, spanners and splicers.

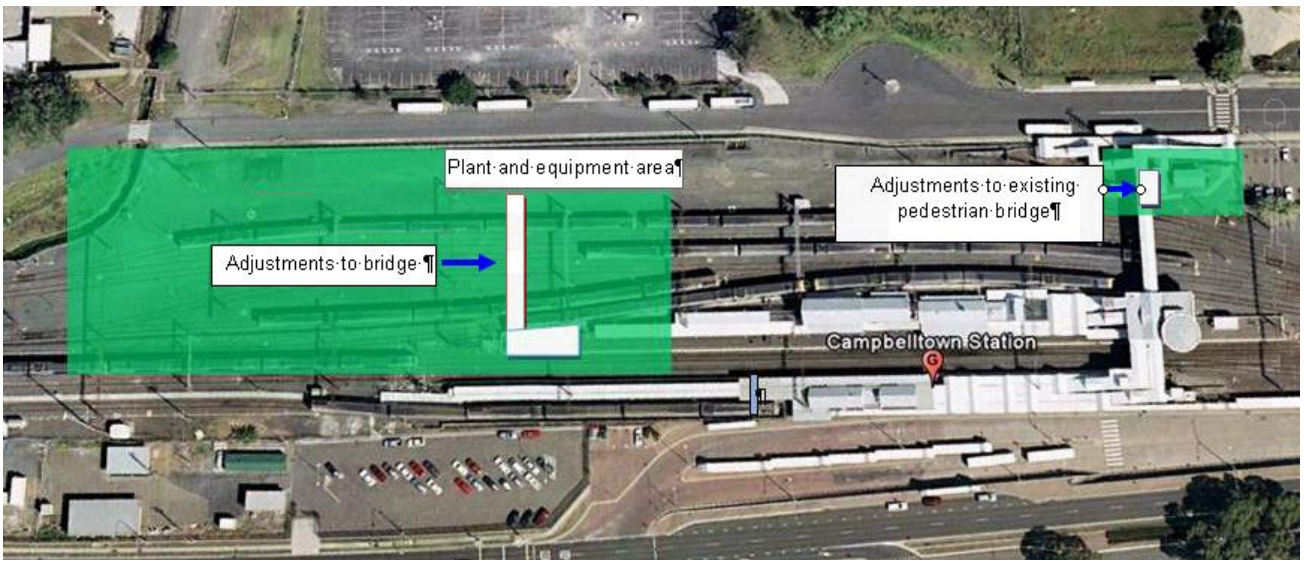
#### **Campbelltown**

These works will take place on Saturday 8 and Sunday 9 January 2011 from 7am to 10pm. The works will include relocating the signalling cabinet. The equipment required for these works include site vehicles, 5t excavator, vacuum truck, dumper truck and Hiab truck.

#### **Campbelltown Station**

The works will be undertaken on Sunday 2, Sunday 9 and Sunday 16 January from 8am to 5pm and Monday 3, Saturday 8 and Saturday 15 January 2011 from 7am to 5pm. There will be a contingency period for additional works to 7pm on all days between Sunday 2 to Sunday 16 January 2011.

The works will include constructing guttering, downpipes and lighting; installing the RailCorp swipe card system, security fencing and gates to stairs 1, 2 and 3; installing piles, beams and deflection wall; and relocating stormwater drainage. The equipment required for these works include a 100t crane, 20t Franna, scaffolding, generator, piling rig, oxy sets, delivery truck, and hand tools.



### **Campbelltown to Glenlee**

These works will take place on one weekend in January, either Sunday 2 and Monday 3 or Saturday 8 and Sunday 9 or Saturday 15 and Sunday 16 January 2011 from 7am to 10pm. The works will include installing, changing over and commissioning of communications cables (Combined Services Route Zone 1). The equipment required for these works include site vehicles, power winches, generators and non-powered hand tools including screw drivers, pliers, spanners and splicers.

We appreciate your patience while we build this important project for Sydney, NSW and the nation.

**For Further information** - Please phone our 24 Hour Information and Complaints Line on 1800 182 543 or Email [ssfl@artc.com.au](mailto:ssfl@artc.com.au) or Visit [www.ssfl.artc.com.au](http://www.ssfl.artc.com.au)



Translating & Interpreting Service – **Please Phone:** 131 450