



## **Southern Sydney Freight Line IMPORTANT COMMUNITY INFORMATION**

### **Construction works from Ingleburn to Campbelltown**

The Australian Rail Track Corporation (ARTC) is presently undertaking a program of works to improve the efficiency and cost effectiveness of rail freight services. ARTC is constructing the Southern Sydney Freight Line (SSFL) which will provide a dedicated freight line from Sefton to Macarthur, providing a third track in the rail corridor dedicated for freight services, allowing passenger and freight services to operate independently.

ARTC and Leighton Contractors have joined in an Alliance called the Southern Freight Link (SFL) who will deliver the SSFL. The works between Ingleburn and Campbelltown will start in the week commencing **5 December 2011** and will take up to 18 months to complete.

Construction activities include:

- Site establishment of temporary site compound in Montore Road, Minto and a number of smaller compounds within the rail corridor and project boundaries
- Noise walls will be installed along the new freight line at Ingleburn, Minto and Campbelltown
- Construction of a viaduct at Bow Bowing Creek, Minto
- Construction of an underbridge at Bow Bowing Creek, Macarthur and a realignment of the creek
- Realignment and upgrade of Farrow Road to improve current vehicular access
- Completion of a culvert structure at Burunji Creek
- General earthworks, excavation, construction of retaining walls and civil works to allow for the construction of the new freight line

To undertake these works, the plant and equipment used will include elevated work platforms, dozers, excavators, graders, smooth drum rollers, compactors, mobile cranes, piling rigs, dump trucks, concrete trucks and pumps, delivery vehicles, and powered and non-powered hand tools.

### **Traffic Management and Construction Access**

The existing road network is required to access the rail corridor. Every effort will be made not to cause inconvenience or disruption when using these roads. At no time footpaths or driveways will be obstructed by vehicles connected to freight line works. Access to the rail corridor is through an approved traffic management plan and the following haulage routes are to be used to bring plant and equipment into the rail corridor.

- **Ingleburn:** Stanley Road and Broadhurst Road
- **Minto:** Essex Street, Lincoln Street and Huntsmore Road
- **Leumeah:** Plough Inn Road

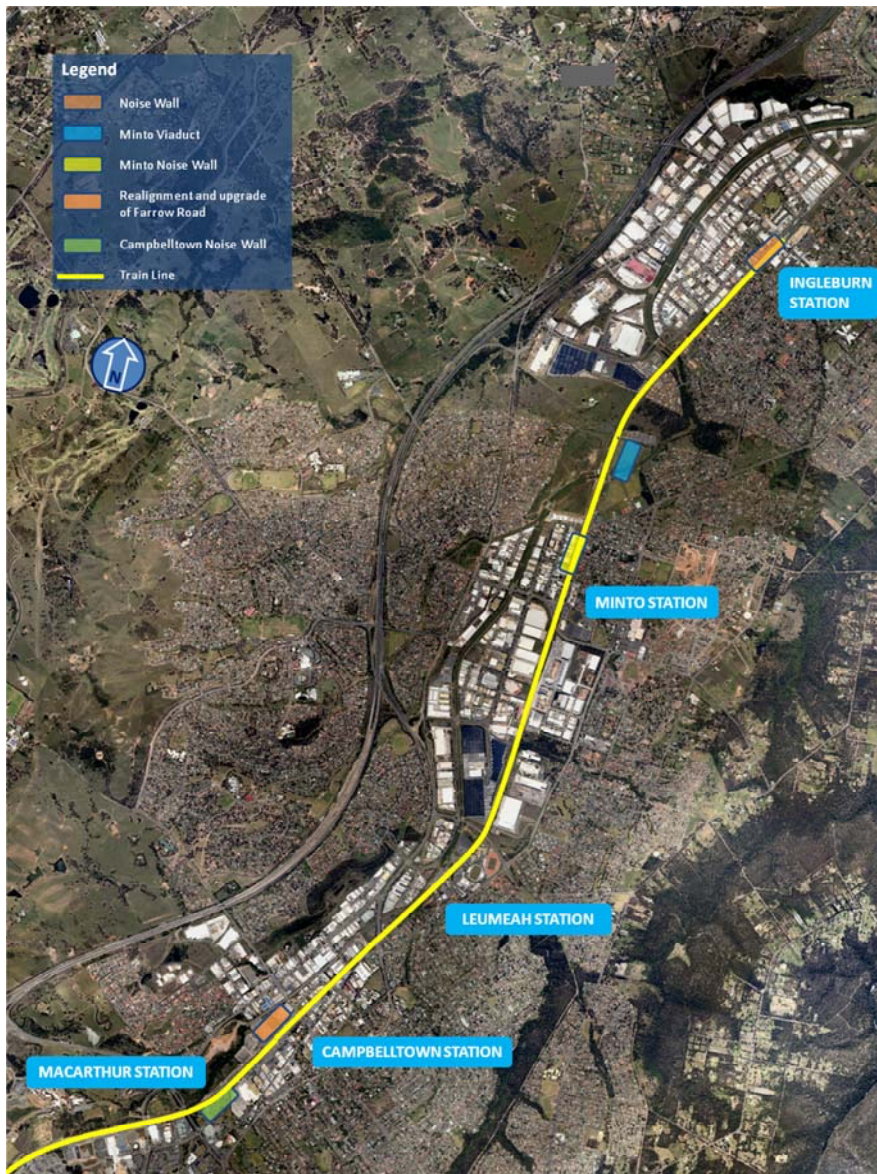
### **Current and Upcoming works**

During November 2011 service investigations and the establishment of the temporary site compound at Minto commenced. This compound will remain in place for approximately 18 months.

During December 2011 service investigations will be undertaken in a number of locations across the work area. Clearing of vegetation and weeds adjacent to the existing passenger line will be undertaken in and around Minto, Leumeah and Campbelltown. Environmental controls will be established on all sites prior to commencement of works.

All works mentioned in this community update will be undertaken within approved construction hours between 7.00am to 6.00pm Monday to Friday and 8.00am and 1.00pm Saturdays. Out of hours construction activities, including weekend and night time works, will be undertaken in accordance with the requirements of the NSW Office of Environment and Heritage and potentially affected residents will be notified prior to all out of hours works.

A possession weekend is scheduled for the weekend of 17 December 2011, and potentially affected residents will be notified prior to this possession.



We appreciate your patience while we build this important project for Sydney and NSW.

For further information please phone our 24 Hour Information Line on 1800 182 543 or email [ssfl@artc.com.au](mailto:ssfl@artc.com.au) or visit [www.ssfl.artc.com.au](http://www.ssfl.artc.com.au)



Translating & Interpreting Service – Please Phone: 131 450